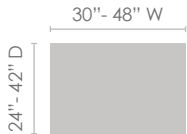


PRODUCT SPECIFICATIONS

ClassiX tables feature great style, high quality, and good value. They are used in a café or breakroom areas. A wide range of sizes, shapes, color options, and dining or bar height offers the flexibility to meet any specification requirement.

RECTANGLE



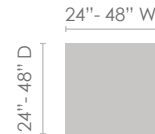
Standard Height: 29"
Bar Height: 42"
Custom Height: 5" - 42"

ROUND



Standard Height: 29"
Bar Height: 42"
Custom Height: 5" - 42"

SQUARE



Standard Height: 29"
Bar Height: 42"
Custom Height: 5" - 42"

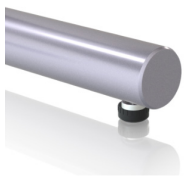
BASE CONSTRUCTION

- Bolted
- 3" diameter 14 gauge steel columns
- 3" diameter 14 gauge steel feet with metal end caps
- 10" x 10" welded mounting plate
- 1-3/8" diameter levelers with steel threaded inserts
- 20 powder coat finishes

OPTIONS



Casters



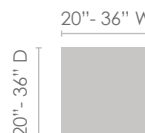
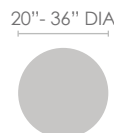
Self Leveling Glides



Flip Top

ClassiX quick-flip mechanism flips the top by pulling on the release handle. The top locks automatically when returned to a horizontal position.

ClassiX Flip Top is available for tables:



ACCESSORIES

- Power & Data
- Wire management

WARRANTY 10-year parts and labor



TOP OPTIONS

ALL TOPS ARE PRE-DRILLED

TFL

- 1" low pressure, 45# core
- Low pressure laminate on both sides
- Anti-sag top support is included with tables over 60" L

HPL

- Structure: 1 1/4" thick 45# density particle board core
- .038 paper backer sheet less than 48"
- .038 phenolic backer equal or greater than 48"
- High Pressure laminate
- Balanced laminate backer
- Round and square tops over 60" are 1 piece, 66" to 96" are 2 pieces
- Rectangle, boat, oval, and racetrack tops under 96" are 1 piece. 108" to 144" tops feature 2 pieces with optional one-piece for an upcharge
- Anti-sag top support is included with tables over 60" L

WOOD VENEER

- Structure: 1 1/4" thick 45# density particle board core
- .038 paper backer sheet less than 48"
- .038 phenolic backer equal or greater than 48"
- Largest one-piece tabletop is 12' x 5'
- Biscuits and dog bones are standard for joining tops
- Long grain match is standard on one-piece tops, short grain is standard on multiple-piece tops
- Alternative stains are available for an additional fee
- Round and square tops over 60" are 1 piece, 66" to 96" are 2 pieces
- Rectangle, boat, oval, and racetrack tops over 120" are made of 2 pieces

EDGE OPTIONS

TFL

- Matching color vinyl edge

HPL

- Matching or contrasting color vinyl edge
- Wood edges
- Urethane edges

WOOD VENEER

- 8 edge styles stained to match the veneer
- Square corners are standard
- Rounded corners are optional