

**PRODUCT SPECIFICATIONS**

Fusion tables offer high-quality construction and soft contemporary design with elegant arched feet.

ROUND



30"- 42" DIA



Heights: 29", 42"  
Custom: 5" - 42"

SQUARE



30"- 42" W



Heights: 29", 42"  
Custom: 5" - 42"



Standard Height 29"

Bar Height 42"

Custom Height 5" - 42"

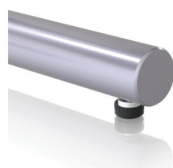
**BASE CONSTRUCTION**

- Bolted
- 3" diameter column
- 2" diameter 14 gauge steel feet
- 8" x 8" x 7/32" welded mounting plate
- 1-3/8" diameter plastic levelers with steel threaded inserts
- 20 powder coat finishes

**OPTIONS**



Skate Casters



Self-leveling glides

**OTHER ACCESSORIES**

- Power & Data
- Wire management

**WARRANTY** 10-year parts and labor



**PRODUCT SPECIFICATIONS**

## TOP OPTIONS

ALL TOPS ARE PRE-DRILLED

### TFL

- 1" low pressure, 45# core
- Low pressure laminate on both sides
- Anti-sag top support is included with tables over 60" L

### HPL

- Structure: 1 1/4" thick 45# density particle board core
- .038 paper backer sheet less than 48"
- .038 phenolic backer equal or greater than 48"
- High Pressure laminate
- Balanced laminate backer
- Round and square tops over 60" are 1 piece, 66" to 96" are 2 pieces
- Rectangle, boat, oval, and racetrack tops under 96" are 1 piece. 108" to 144" tops feature 2 pieces with optional one-piece for an upcharge
- Anti-sag top support is included with tables over 60" L

### WOOD VENEER

- Structure: 1 1/4" thick 45# density particle board core
- .038 paper backer sheet less than 48"
- .038 phenolic backer equal or greater than 48"
- Largest one-piece tabletop is 12' x 5'
- Biscuits and dog bones are standard for joining tops
- Long grain match is standard on one-piece tops, short grain is standard on multiple-piece tops
- Alternative stains are available for an additional fee
- Round and square tops over 60" are 1 piece, 66" to 96" are 2 pieces
- Rectangle, boat, oval, and racetrack tops over 120" are made of 2 pieces

## EDGE OPTIONS

### TFL

- Matching color vinyl edge

### HPL

- Matching or contrasting color vinyl edge
- Wood edges
- Urethane edges

### WOOD VENEER

- 8 edge styles stained to match the veneer
- Square corners are standard
- Rounded corners are optional