



PRICE LIST

SAFE-T | SCREENS & BARRIERS

Effective August 15, 2022

PRICING & FREIGHT NOTIFICATIONS

Pricing Disclaimer

Although the information in this Price List is presented in good faith and believed to be correct at the time of publication, Special-T has no liability for any errors or omissions. Also, please note that all prices are subject to change.

Special-T shall have the right to refuse or cancel any order placed for a product listed at the incorrect price. If an item's correct price is lower than our stated price, we will charge the lower amount and ship the item.

If an item's correct price is higher than our stated price, we will notify the price error for review and extend an opportunity to purchase the item at the correct price.

Freight Notifications

Minimum Freight Fee

FOB: Destination on table orders over 5,000 List.

195 freight fee on orders less than 5,000 List (Prepaid & Add) | Dock-to-Dock delivery.

Patriot Electric & Liberty Electric Bases Only

QTY: 1 - 3 55 each | 4-15 33 each | 16 - 50 27 each | 51 + 16 each

FOB: Alpharetta, GA; PPD & ADD | Dock-to-Dock delivery.

Shipments Outside Continental U.S.

Qualified Freight Prepaid orders with final destination outside Continental U.S. will ship to the Freight Forwarder or Port of Embarkation within the 48 contiguous states. Shipments from Freight Forwarder/Port of Embarkation will ship FOB: Origin to final destination.

Oversize Fee

All LTL shipments for pallets 8' and over

96"-108" - additional 250.00

109"-168" - additional 350.00

Per custom pallet



**SAFE-T
SCREENS &
BARRIERS
PRICE LIST**

Effective August 15, 2022

TABLE OF CONTENTS

SAFE-T SCREENS & BARRIERS

CLEAR PLEXIGLASS X-SHAPE SAFE-T SCREENS

X-Shape Safe-T Screens 05

CLEAR PLEXIGLASS SAFE-T SCREENS

Floor-Standing Safe-T Mobile Divider 07

Executive Folding Safe-T Screen 07

Safe-T Screen Transaction Screen with Metal Supports 07

CLEAR PLEXIGLASS SAFE-T SCREENS

Worksurface and Cubicle Screens - Permanent Attachment 08

Free-Standing or Permanent Attachment Screens 09

Worksurface Screens with Removable C-Clamp 10

Free-Standing Screens for Worksurfaces and Cubicles 11

Screens for Cubicle Panels with U-Brackets 12

FROSTED ACRYLIC SAFE-T SCREEN

Worksurface and Cubicle Screens - Permanent Attachment 13

Free-Standing or Permanent Attachment Screens 14

Worksurface Screens with Removable C-Clamp 15

Free-Standing Screens for Worksurfaces and Cubicles 16

Screens for Cubicle Panels with U-Brackets 17

POLYCARBONATE SAFE-T SCREENS

Worksurface and Cubicle Screens - Permanent Attachment 18

Free-Standing or Permanent Attachment Screens 19

Worksurface Screens with Removable C-Clamp 20

Free-Standing Screens for Worksurfaces and Cubicles 21

Screens for Cubicle Panels with U-Brackets 22

PET SAFE-T SCREENS

Worksurface and Cubicle Screens - Permanent Attachment 23

Free-Standing or Permanent Attachment Screens 23

Worksurface Screens with Removable C-Clamp 24

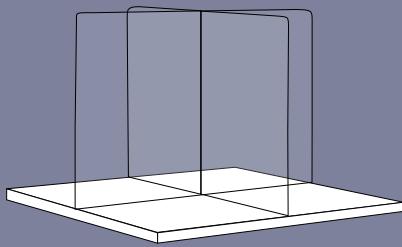
Free-Standing Screens for Worksurfaces and Cubicles 24

Screens for Cubicle Panels with U-Brackets 25

Privacy and Modesty Screens 26

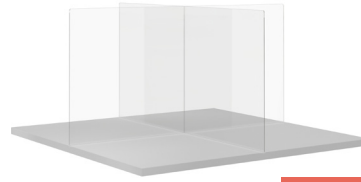
Sliding Desk Divider 26







Warranty & Return Policy 28



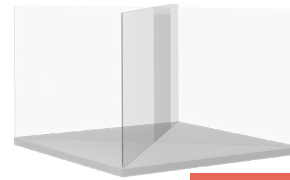
SAFE-T SCREENS & BARRIERS

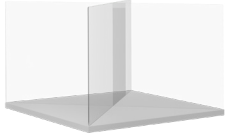
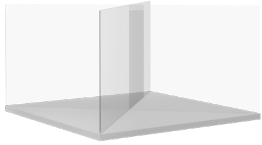
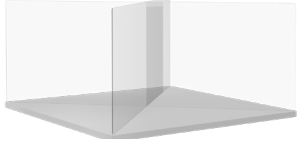
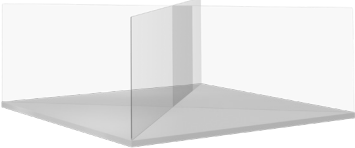
Clear Plexiglass X-Shape Screens Side to Side Placement


[CONFIGURE & PRICE](#)

X-SHAPE SCREEN SIDE TO SIDE PLACEMENT	MODEL NUMBER	DESCRIPTION	DIMENSIONS H X L X W	LIST PRICE
	PLEX-X243636	X-Shape Safe-T Screens (2) 24"H x 36"L x 0.25"D Clear Plexiglass for 36" Tables, Side to Side Placement	24" x 36" x 36" x 0.25"	336
	PLEX-X244242	X-Shape Safe-T Screens (2) 24"H x 42"L x 0.25"D Clear Plexiglass for 42" Tables, Side to Side Placement	24" x 42" x 42" x 0.25"	381
	PLEX-X244848	X-Shape Safe-T Screens (2) 24"H x 48"L x 0.25"D Clear Plexiglass for 48" Tables, Side to Side Placement	24" x 48" x 48" x 0.25"	442
	PLEX-X246060	X-Shape Safe-T Screens (2) 24"H x 60"L x 0.25"D Clear Plexiglass for 60" Tables, Side to Side Placement	24" x 60" x 60" x 0.25"	623
	PLEX-X242472	X-Shape Safe-T Screens (1) 24"H x 72"L x 0.25"W and (2) 24"H x 23.5"L x 0.25"W Clear Plexiglass for 24" x 72" Tables	24" x 23.5" x 71.5" x 0.25"	676
	PLEX-X243072	X-Shape Safe-T Screens (1) 24"H x 72"L x 0.25"W and (2) 24"H x 29.5"L x 0.25"W Clear Plexiglass for 30" x 72" Tables	24" x 29.5" x 71.5" x 0.25"	730
Other Options	PSCON-24	24"H Vertical Screen Connector		30
	ST-T-2	2" Long Desktop T-Mounts with Double Sided Tape		25

Clear Plexiglass X-Shape Screens Diagonal Placement


[CONFIGURE & PRICE](#)

X-SHAPE SCREEN DIAGONAL PLACEMENT	MODEL NUMBER	DESCRIPTION	DIMENSIONS H X L X W	LIST PRICE
	PLEX-X245151-DP	X-Shape Safe-T Screens (2) 24"H x 51"L x 0.25"D Clear Plexiglass for 36" x 36" Square Tables, Diagonal Placement	24" x 51" x 51" x 0.25"	505
	PLEX-X246060-DP	X-Shape Safe-T Screens (2) 24"H x 60"L x 0.25"D Clear Plexiglass for 42" x 42" Square Tables, Diagonal Placement	24" x 60" x 60" x 0.25"	623
	PLEX-X246868-DP	X-Shape Safe-T Screens (2) 24"H x 68"L x 0.25"D Clear Plexiglass for 48" x 48" Square Tables, Diagonal Placement	24" x 68" x 68" x 0.25"	659
	PLEX-X248585-DP	X-Shape Safe-T Screens (2) 24"H x 85"L x 0.25"D Clear Plexiglass for 60" x 60" Square Tables, Diagonal Placement	24" x 85" x 85" x 0.25"	719
Other Options	PSCON-24	24"H Vertical Screen Connector		30
	ST-T-2	2" Long Desktop T-Mounts with Double Sided Tape		25

SAFE-T SCREENS & BARRIERS
Clear Plexiglass Screens



SELF STANDING SCREEN	MODEL NUMBER	DESCRIPTION	DIMENSIONS H X L X W	LIST PRICE
Floor-Standing Safe-T Mobile Divider			CONFIGURE & PRICE	
	ST-RLFRM-3475	Floor-Standing Safe-T Mobile Divider, 34"W x 75"H, Metal frame; Cast Acrylic Screen; Locking Casters; Pre-assembled	34" x 75"	783
	ST-RLFRM-4375	Floor-Standing Safe-T Mobile Divider, 43"W x 75"H, Metal frame; Cast Acrylic Screen; Locking Casters; Pre-assembled	43" x 75"	932
Executive Folding Safe-T Screen			CONFIGURE & PRICE	
	ST-EXE-242412	Executive Folding Safe-T Screen with Metal Hinges; Cast Acrylic; Front Panel 24" x 24"; 2 Side Panels 24" x 12"; Pre-assembled	24" x 48"	464
Safe-T Transaction Screen with Metal Supports			CONFIGURE & PRICE	
	ST-TS-3640	Safe-T Transaction Screen, includes a 36"H X 40"W screen with a 6" X 18" Passthrough Window, and 2 Metal Supports	40" x 36"	719

SAFE-T SCREENS & BARRIERS
Clear Plexiglass Screens



Worksurface and Cubicle Screens - Permanent Attachment

CONFIGURE & PRICE

HARDWARE	MODEL NUMBER		DESCRIPTION	DIMENSIONS H X L X W	LIST PRICE
	SIDE SCREENS	PLEX1424-PS-BR	Clear Plexiglass Screen with Permanent Attachment Brackets	14" x 23.5" x 0.25"	162
		PLEX1430-PS-BR		14" x 29.5" x 0.25"	173
	FRONT SCREENS	PLEX1436-PS-BR		14" x 36" x 0.25"	203
		PLEX1442-PS-BR		14" x 42" x 0.25"	227
		PLEX1448-PS-BR		14" x 48" x 0.25"	231
		PLEX1460-PS-BR		14" x 60" x 0.25"	294
		PLEX1472-PS-BR		14" x 72" x 0.25"	329
	SIDE SCREENS	PLEX2424-PS-BR		24" x 23.5" x 0.25"	208
		PLEX2430-PS-BR		24" x 29.5" x 0.25"	237
	FRONT SCREENS	PLEX2436-PS-BR		24" x 36" x 0.25"	275
		PLEX2442-PS-BR		24" x 42" x 0.25"	344
		PLEX2448-PS-BR		24" x 48" x 0.25"	358
		PLEX2460-PS-BR		24" x 60" x 0.25"	415
		PLEX2472-PS-BR		24" x 72" x 0.25"	473
	SIDE SCREENS	PLEX3024-PS-BR		30" x 23.5" x 0.25"	393
		PLEX3030-PS-BR		30" x 29.5" x 0.25"	434
	FRONT SCREENS	PLEX3036-PS-BR		30" x 36" x 0.25"	536
		PLEX3042-PS-BR		30" x 42" x 0.25"	578
		PLEX3048-PS-BR		30" x 48" x 0.25"	620
		PLEX3060-PS-BR		30" x 60" x 0.25"	763
PLEX3072-PS-BR		30" x 72" x 0.25"	845		
Other Options	TOP ALIGNMENT BRACKETS				
	PLEX-BR-AL-S	180° Aluminum Screen Bracket	4		
	PLEX-BR-AL-L	90° "L" Aluminum Screen Bracket	6		
	PLEX-BR-AL-T	"T" Aluminum Screen Bracket	7		
	PLEX-BR-AL-X	"X" Aluminum Screen Bracket	9		

Note: Top Alignment Brackets maintain alignment and add stability to Clear Plexiglass, Frosted Acrylic, and Polycarbonate screens. Brackets feature 2-way, 3-way, or 4-way connections and are paired based on project requirements.

SAFE-T SCREENS & BARRIERS
Clear Plexiglass Screens



Free-Standing or Permanent Attachment Screens

CONFIGURE & PRICE

HARDWARE	MODEL NUMBER	DESCRIPTION	DIMENSIONS H X L X W	LIST PRICE	
	SIDE SCREENS	PLEX1424-PS-TMB	14" x 23.5" x 0.25"	188	
		PLEX1430-PS-TMB	14" x 29.5" x 0.25"	199	
	FRONT SCREENS	PLEX1436-PS-TMB	Clear Plexiglass Screen with Permanent Attachment or Optional Double-Sided Tape	14" x 36" x 0.25"	229
		PLEX1442-PS-TMB		14" x 42" x 0.25"	253
		PLEX1448-PS-TMB		14" x 48" x 0.25"	257
		PLEX1460-PS-TMB		14" x 60" x 0.25"	333
		PLEX1472-PS-TMB		14" x 72" x 0.25"	368
	SIDE SCREENS	PLEX2424-PS-TMB	24" x 23.5" x 0.25"	234	
		PLEX2430-PS-TMB	24" x 29.5" x 0.25"	263	
	FRONT SCREENS	PLEX2436-PS-TMB	24" x 36" x 0.25"	301	
		PLEX2442-PS-TMB	24" x 42" x 0.25"	383	
		PLEX2448-PS-TMB	24" x 48" x 0.25"	397	
		PLEX2460-PS-TMB	24" x 60" x 0.25"	454	
		PLEX2472-PS-TMB	24" x 72" x 0.25"	512	
	SIDE SCREENS	PLEX3024-PS-TMB	30" x 23.5" x 0.25"	419	
		PLEX3030-PS-TMB	30" x 29.5" x 0.25"	460	
	FRONT SCREENS	PLEX3036-PS-TMB	30" x 36" x 0.25"	575	
		PLEX3042-PS-TMB	30" x 42" x 0.25"	617	
		PLEX3048-PS-TMB	30" x 48" x 0.25"	659	
		PLEX3060-PS-TMB	30" x 60" x 0.25"	815	
PLEX3072-PS-TMB		30" x 72" x 0.25"	897		
Other Options	TAPE	Heavy-Duty Double-Sided Tape		18	
	TOP ALIGNMENT BRACKETS				
	PLEX-BR-AL-S	180° Aluminum Screen Bracket		4	
	PLEX-BR-AL-L	90° "L" Aluminum Screen Bracket		6	
	PLEX-BR-AL-T	"T" Aluminum Screen Bracket		7	
	PLEX-BR-AL-X	"X" Aluminum Screen Bracket		9	

Note: Top Alignment Brackets maintain alignment and add stability to Clear Plexiglass, Frosted Acrylic, and Polycarbonate screens. Brackets feature 2-way, 3-way, or 4-way connections and are paired based on project requirements.

SAFE-T SCREENS & BARRIERS
Clear Plexiglass Screens



Worksurface Screens with Removable C-Clamp

CONFIGURE & PRICE

HARDWARE	MODEL NUMBER		DESCRIPTION	DIMENSIONS H X L X W	LIST PRICE
	SIDE SCREENS	PLEX1424-PS-C-BR	Clear Plexiglass Screen with C-Clamp Attachment	14" x 23.5" x 0.25"	283
		PLEX1430-PS-C-BR		14" x 29.5" x 0.25"	294
	FRONT SCREENS	PLEX1436-PS-C-BR		14" x 36" x 0.25"	324
		PLEX1442-PS-C-BR		14" x 42" x 0.25"	348
		PLEX1448-PS-C-BR		14" x 48" x 0.25"	352
		PLEX1460-PS-C-BR		14" x 60" x 0.25"	415
		PLEX1472-PS-C-BR		14" x 72" x 0.25"	450
	SIDE SCREENS	PLEX2424-PS-C-BR		24" x 23.5" x 0.25"	329
		PLEX2430-PS-C-BR		24" x 29.5" x 0.25"	358
	FRONT SCREENS	PLEX2436-PS-C-BR		24" x 36" x 0.25"	396
		PLEX2442-PS-C-BR		24" x 42" x 0.25"	465
		PLEX2448-PS-C-BR		24" x 48" x 0.25"	479
		PLEX2460-PS-C-BR		24" x 60" x 0.25"	536
		PLEX2472-PS-C-BR		24" x 72" x 0.25"	594
	SIDE SCREENS	PLEX3024-PS-C-BR		30" x 23.5" x 0.25"	514
		PLEX3030-PS-C-BR		30" x 29.5" x 0.25"	555
	FRONT SCREENS	PLEX3036-PS-C-BR		30" x 36" x 0.25"	657
		PLEX3042-PS-C-BR		30" x 42" x 0.25"	699
		PLEX3048-PS-C-BR		30" x 48" x 0.25"	741
		PLEX3060-PS-C-BR		30" x 60" x 0.25"	884
PLEX3072-PS-C-BR		30" x 72" x 0.25"	966		
Other Options	TOP ALIGNMENT BRACKETS				
	PLEX-BR-AL-S	180° Aluminum Screen Bracket	4		
	PLEX-BR-AL-L	90° "L" Aluminum Screen Bracket	6		
	PLEX-BR-AL-T	"T" Aluminum Screen Bracket	7		
	PLEX-BR-AL-X	"X" Aluminum Screen Bracket	9		

Note: Top Alignment Brackets maintain alignment and add stability to Clear Plexiglass, Frosted Acrylic, and Polycarbonate screens. Brackets feature 2-way, 3-way, or 4-way connections and are paired based on project requirements.

SAFE-T SCREENS & BARRIERS
Clear Plexiglass Screens



Free-Standing Screens for Worksurfaces and Cubicles

CONFIGURE & PRICE

HARDWARE	MODEL NUMBER	DESCRIPTION	DIMENSIONS H X L X W	LIST PRICE
	SIDE SCREENS	PLEX1424-PS-FOOT	14" x 23.5" x 0.25"	283
		PLEX1430-PS-FOOT	14" x 29.5" x 0.25"	294
	FRONT SCREENS	PLEX1436-PS-FOOT	14" x 36" x 0.25"	324
		PLEX1442-PS-FOOT	14" x 42" x 0.25"	348
		PLEX1448-PS-FOOT	14" x 48" x 0.25"	352
		PLEX1460-PS-FOOT	14" x 60" x 0.25"	415
		PLEX1472-PS-FOOT	14" x 72" x 0.25"	450
	SIDE SCREENS	PLEX2424-PS-FOOT	24" x 23.5" x 0.25"	329
		PLEX2430-PS-FOOT	24" x 29.5" x 0.25"	358
	FRONT SCREENS	PLEX2436-PS-FOOT	24" x 36" x 0.25"	396
		PLEX2442-PS-FOOT	24" x 42" x 0.25"	465
		PLEX2448-PS-FOOT	24" x 48" x 0.25"	479
		PLEX2460-PS-FOOT	24" x 60" x 0.25"	536
		PLEX2472-PS-FOOT	24" x 72" x 0.25"	594
	SIDE SCREENS	PLEX3024-PS-FOOT	30" x 23.5" x 0.25"	514
		PLEX3030-PS-FOOT	30" x 29.5" x 0.25"	555
	FRONT SCREENS	PLEX3036-PS-FOOT	30" x 36" x 0.25"	657
		PLEX3042-PS-FOOT	30" x 42" x 0.25"	699
		PLEX3048-PS-FOOT	30" x 48" x 0.25"	741
		PLEX3060-PS-FOOT	30" x 60" x 0.25"	884
PLEX3072-PS-FOOT		30" x 72" x 0.25"	966	
Other Options	MAGNETS	Magnets		91
	TAPE	Heavy-Duty Double-Sided Tape		18
	TOP ALIGNMENT BRACKETS			
	PLEX-BR-AL-S	180° Aluminum Screen Bracket		4
	PLEX-BR-AL-L	90° "L" Aluminum Screen Bracket		6
	PLEX-BR-AL-T	"T" Aluminum Screen Bracket		7
	PLEX-BR-AL-X	"X" Aluminum Screen Bracket		9

Note: Top Alignment Brackets maintain alignment and add stability to Clear Plexiglass, Frosted Acrylic, and Polycarbonate screens. Brackets feature 2-way, 3-way, or 4-way connections and are paired based on project requirements.

Worksurface Screens with Permanent Attachment and Free-Standing Screens can be used to extend cubicle panel height. Use strong magnets, or heavy-duty double-sided tape to avoid cubicle cap damage.

SAFE-T SCREENS & BARRIERS
Clear Plexiglass Screens



Screens for Cubicle Panels with U-Brackets

CONFIGURE & PRICE

HARDWARE	MODEL NUMBER	DESCRIPTION	DIMENSIONS H X L X W	LIST PRICE
	SIDE SCREENS	PLEX1424-PS-U-BR	14" x 23.5" x 0.25"	374
		PLEX1430-PS-U-BR	14" x 29.5" x 0.25"	385
	FRONT SCREENS	PLEX1436-PS-U-BR	14" x 36" x 0.25"	415
		PLEX1442-PS-U-BR	14" x 42" x 0.25"	439
		PLEX1448-PS-U-BR	14" x 48" x 0.25"	443
		PLEX1460-PS-U-BR	14" x 60" x 0.25"	506
		PLEX1472-PS-U-BR	14" x 72" x 0.25"	541
	SIDE SCREENS	PLEX2424-PS-U-BR	24" x 23.5" x 0.25"	420
		PLEX2430-PS-U-BR	24" x 29.5" x 0.25"	449
	FRONT SCREENS	PLEX2436-PS-U-BR	24" x 36" x 0.25"	487
		PLEX2442-PS-U-BR	24" x 42" x 0.25"	556
		PLEX2448-PS-U-BR	24" x 48" x 0.25"	570
		PLEX2460-PS-U-BR	24" x 60" x 0.25"	627
		PLEX2472-PS-U-BR	24" x 72" x 0.25"	685
	SIDE SCREENS	PLEX3024-PS-U-BR	30" x 23.5" x 0.25"	605
		PLEX3030-PS-U-BR	30" x 29.5" x 0.25"	646
	FRONT SCREENS	PLEX3036-PS-U-BR	30" x 36" x 0.25"	748
		PLEX3042-PS-U-BR	30" x 42" x 0.25"	790
		PLEX3048-PS-U-BR	30" x 48" x 0.25"	832
		PLEX3060-PS-U-BR	30" x 60" x 0.25"	975
PLEX3072-PS-U-BR		30" x 72" x 0.25"	1,057	
Other Options	U-BR-XL	Up-charge for Extra Large U-Brackets for 2.75" - 4.75" Wide Panels		242
	TOP ALIGNMENT BRACKETS			
	PLEX-BR-AL-S	180° Aluminum Screen Bracket		4
	PLEX-BR-AL-L	90° "L" Aluminum Screen Bracket		6
	PLEX-BR-AL-T	"T" Aluminum Screen Bracket		7
	PLEX-BR-AL-X	"X" Aluminum Screen Bracket		9

Note: Top Alignment Brackets maintain alignment and add stability to Clear Plexiglass, Frosted Acrylic, and Polycarbonate screens. Brackets feature 2-way, 3-way, or 4-way connections and are paired based on project requirements.

SAFE-T SCREENS & BARRIERS
Frosted Acrylic Screens



Worksurface and Cubicle Screens - Permanent Attachment

CONFIGURE & PRICE

HARDWARE	MODEL NUMBER	DESCRIPTION	DIMENSIONS H x L x W	LIST PRICE
	SIDE SCREENS	AP1424-PS-BR	14" x 20.5" x 0.25"	207
		AP1430-PS-BR	14" x 26.5" x 0.25"	207
	FRONT SCREENS	AP1448-PS-BR	14" x 48" x 0.25"	400
		AP1460-PS-BR	14" x 60" x 0.25"	466
		AP1472-PS-BR	14" x 72" x 0.25"	533
	SIDE SCREENS	AP2424-PS-BR	24" x 20.5" x 0.25"	275
		AP2430-PS-BR	24" x 26.5" x 0.25"	337
	FRONT SCREENS	AP2448-PS-BR	24" x 48" x 0.25"	528
		AP2460-PS-BR	24" x 60" x 0.25"	652
		AP2472-PS-BR	24" x 72" x 0.25"	776
	SIDE SCREENS	AP3024-PS-BR	30" x 20.5" x 0.25"	632
		AP3030-PS-BR	30" x 26.5" x 0.25"	747
	FRONT SCREENS	AP3036-PS-BR	30" x 36" x 0.25"	894
		AP3042-PS-BR	30" x 42" x 0.25"	1,010
		AP3048-PS-BR	30" x 48" x 0.25"	1,127
		AP3060-PS-BR	30" x 60" x 0.25"	1,389
AP3072-PS-BR		30" x 72" x 0.25"	1,622	
Other Options		TOP ALIGNMENT BRACKETS		
	PLEX-BR-AL-S	180° Aluminum Screen Bracket		4
	PLEX-BR-AL-L	90° "L" Aluminum Screen Bracket		6
	PLEX-BR-AL-T	"T" Aluminum Screen Bracket		7
	PLEX-BR-AL-X	"X" Aluminum Screen Bracket		9

Note: Top Alignment Brackets maintain alignment and add stability to Clear Plexiglass, Frosted Acrylic, and Polycarbonate screens. Brackets feature 2-way, 3-way, or 4-way connections and are paired based on project requirements.

SAFE-T SCREENS & BARRIERS
Frosted Acrylic Screens



CONFIGURE & PRICE

Free-Standing or Permanent Attachment Screens

HARDWARE	MODEL NUMBER	DESCRIPTION	DIMENSIONS H x L x W	LIST PRICE
	SIDE SCREENS	AP1424-PS-TMB	14" x 20.5" x 0.25"	233
		AP1430-PS-TMB	14" x 26.5" x 0.25"	233
	FRONT SCREENS	AP1448-PS-TMB	14" x 48" x 0.25"	426
		AP1460-PS-TMB	14" x 60" x 0.25"	505
		AP1472-PS-TMB	14" x 72" x 0.25"	572
	SIDE SCREENS	AP2424-PS-TMB	24" x 20.5" x 0.25"	301
		AP2430-PS-TMB	24" x 26.5" x 0.25"	363
	FRONT SCREENS	AP2448-PS-TMB	24" x 48" x 0.25"	567
		AP2460-PS-TMB	24" x 60" x 0.25"	691
		AP2472-PS-TMB	24" x 72" x 0.25"	815
	SIDE SCREENS	AP3024-PS-TMB	30" x 20.5" x 0.25"	658
		AP3030-PS-TMB	30" x 26.5" x 0.25"	773
	FRONT SCREENS	AP3036-PS-TMB	30" x 36" x 0.25"	933
		AP3042-PS-TMB	30" x 42" x 0.25"	1,049
		AP3048-PS-TMB	30" x 48" x 0.25"	1,166
		AP3060-PS-TMB	30" x 60" x 0.25"	1,441
		AP3072-PS-TMB	30" x 72" x 0.25"	1,674
	Other Options	TAPE	Heavy-Duty Double-Sided Tape	
TOP ALIGNMENT BRACKETS				
   	PLEX-BR-AL-S	180° Aluminum Screen Bracket		4
	PLEX-BR-AL-L	90° "L" Aluminum Screen Bracket		6
	PLEX-BR-AL-T	"T" Aluminum Screen Bracket		7
	PLEX-BR-AL-X	"X" Aluminum Screen Bracket		9

Note: Top Alignment Brackets maintain alignment and add stability to Clear Plexiglass, Frosted Acrylic, and Polycarbonate screens. Brackets feature 2-way, 3-way, or 4-way connections and are paired based on project requirements.

SAFE-T SCREENS & BARRIERS
Frosted Acrylic Screens



Worksurface Screens with Removable C-Clamp

[CONFIGURE & PRICE](#)

HARDWARE	MODEL NUMBER	DESCRIPTION	DIMENSIONS H x L x W	LIST PRICE
	SIDE SCREENS	AP1424-PS-C-BR	14" x 20.5" x 0.25"	328
		AP1430-PS-C-BR	14" x 26.5" x 0.25"	328
	FRONT SCREENS	AP1448-PS-C-BR	14" x 48" x 0.25"	521
		AP1460-PS-C-BR	14" x 60" x 0.25"	587
		AP1472-PS-C-BR	14" x 72" x 0.25"	654
	SIDE SCREENS	AP2424-PS-C-BR	24" x 20.5" x 0.25"	396
		AP2430-PS-C-BR	24" x 26.5" x 0.25"	458
	FRONT SCREENS	AP2448-PS-C-BR	24" x 48" x 0.25"	649
		AP2460-PS-C-BR	24" x 60" x 0.25"	773
		AP2472-PS-C-BR	24" x 72" x 0.25"	897
	SIDE SCREENS	AP3024-PS-C-BR	30" x 20.5" x 0.25"	753
		AP3030-PS-C-BR	30" x 26.5" x 0.25"	868
	FRONT SCREENS	AP3036-PS-C-BR	30" x 36" x 0.25"	1,015
		AP3042-PS-C-BR	30" x 42" x 0.25"	1,131
		AP3048-PS-C-BR	30" x 48" x 0.25"	1,248
		AP3060-PS-C-BR	30" x 60" x 0.25"	1,510
AP3072-PS-C-BR		30" x 72" x 0.25"	1,743	
Other Options		TOP ALIGNMENT BRACKETS		
	PLEX-BR-AL-S	180° Aluminum Screen Bracket	4	
	PLEX-BR-AL-L	90° "L" Aluminum Screen Bracket	6	
	PLEX-BR-AL-T	"T" Aluminum Screen Bracket	7	
	PLEX-BR-AL-X	"X" Aluminum Screen Bracket	9	

Note: Top Alignment Brackets maintain alignment and add stability to Clear Plexiglass, Frosted Acrylic, and Polycarbonate screens. Brackets feature 2-way, 3-way, or 4-way connections and are paired based on project requirements.

SAFE-T SCREENS & BARRIERS
Frosted Acrylic Screens



Free-Standing Screens for Worksurfaces and Cubicles

[CONFIGURE & PRICE](#)

HARDWARE	MODEL NUMBER	DESCRIPTION	DIMENSIONS H x L x W	LIST PRICE
	SIDE SCREENS	AP1424-PS-FOOT	14" x 20.5" x 0.25"	328
		AP1430-PS-FOOT	14" x 26.5" x 0.25"	328
	FRONT SCREENS	AP1448-PS-FOOT	14" x 48" x 0.25"	521
		AP1460-PS-FOOT	14" x 60" x 0.25"	587
		AP1472-PS-FOOT	14" x 72" x 0.25"	654
	SIDE SCREENS	AP2424-PS-FOOT	24" x 20.5" x 0.25"	396
		AP2430-PS-FOOT	24" x 26.5" x 0.25"	458
	FRONT SCREENS	AP2448-PS-FOOT	24" x 48" x 0.25"	649
		AP2460-PS-FOOT	24" x 60" x 0.25"	773
		AP2472-PS-FOOT	24" x 72" x 0.25"	897
	SIDE SCREENS	AP3024-PS-FOOT	30" x 20.5" x 0.25"	753
		AP3030-PS-FOOT	30" x 26.5" x 0.25"	868
	FRONT SCREENS	AP3036-PS-FOOT	30" x 36" x 0.25"	1,015
		AP3042-PS-FOOT	30" x 42" x 0.25"	1,131
		AP3048-PS-FOOT	30" x 48" x 0.25"	1,248
		AP3060-PS-FOOT	30" x 60" x 0.25"	1,510
AP3072-PS-FOOT		30" x 72" x 0.25"	1,743	
Other Options	MAGNETS	Magnets		91
	TAPE	Heavy-Duty Double-Sided Tape		18
	TOP ALIGNMENT BRACKETS			
	PLEX-BR-AL-S	180° Aluminum Screen Bracket		4
	PLEX-BR-AL-L	90° "L" Aluminum Screen Bracket		6
	PLEX-BR-AL-T	"T" Aluminum Screen Bracket		7
	PLEX-BR-AL-X	"X" Aluminum Screen Bracket		9

Note: Top Alignment Brackets maintain alignment and add stability to Clear Plexiglass, Frosted Acrylic, and Polycarbonate screens. Brackets feature 2-way, 3-way, or 4-way connections and are paired based on project requirements.

Worksurface Screens with Permanent Attachment and Free-Standing Screens can be used to extend cubicle panel height. Use strong magnets, or heavy-duty double-sided tape to avoid cubicle cap damage.

SAFE-T SCREENS & BARRIERS
Frosted Acrylic Screens



[CONFIGURE & PRICE](#)

Screens for Cubicle Panels with U-Brackets

HARDWARE	MODEL NUMBER	DESCRIPTION	DIMENSIONS H X L X W	LIST PRICE	
	SIDE SCREENS	AP1424-PS-U-BR	14" x 20.5" x 0.25"	419	
		AP1430-PS-U-BR	14" x 26.5" x 0.25"	419	
	FRONT SCREENS	AP1448-PS-U-BR	Frosted Acrylic Screen with U-Bracket Attachment for 1.875" - 2.75" Wide Panels	14" x 48" x 0.25"	612
		AP1460-PS-U-BR		14" x 60" x 0.25"	678
		AP1472-PS-U-BR		14" x 72" x 0.25"	745
	SIDE SCREENS	AP2424-PS-U-BR		24" x 20.5" x 0.25"	487
		AP2430-PS-U-BR		24" x 26.5" x 0.25"	549
	FRONT SCREENS	AP2448-PS-U-BR		24" x 48" x 0.25"	740
		AP2460-PS-U-BR	24" x 60" x 0.25"	864	
		AP2472-PS-U-BR	24" x 72" x 0.25"	988	
	SIDE SCREENS	AP3024-PS-U-BR	30" x 20.5" x 0.25"	844	
		AP3030-PS-U-BR	30" x 26.5" x 0.25"	959	
	FRONT SCREENS	AP3036-PS-U-BR	30" x 36" x 0.25"	1,106	
		AP3042-PS-U-BR	30" x 42" x 0.25"	1,222	
		AP3048-PS-U-BR	30" x 48" x 0.25"	1,339	
		AP3060-PS-U-BR	30" x 60" x 0.25"	1,601	
AP3072-PS-U-BR		30" x 72" x 0.25"	1,834		
Other Options	U-BR-XL	Up-charge for Extra Large U-Brackets for 2.75" - 4.75" Wide Panels		242	
	TOP ALIGNMENT BRACKETS				
	PLEX-BR-AL-S	180° Aluminum Screen Bracket		4	
	PLEX-BR-AL-L	90° "L" Aluminum Screen Bracket		6	
	PLEX-BR-AL-T	"T" Aluminum Screen Bracket		7	
	PLEX-BR-AL-X	"X" Aluminum Screen Bracket		9	

Note: Top Alignment Brackets maintain alignment and add stability to Clear Plexiglass, Frosted Acrylic, and Polycarbonate screens. Brackets feature 2-way, 3-way, or 4-way connections and are paired based on project requirements.

SAFE-T SCREENS & BARRIERS
Polycarbonate Screens



Worksurface and Cubicle Screens - Permanent Attachment

HARDWARE	MODEL NUMBER		DESCRIPTION	DIMENSIONS H X L X W	LIST PRICE
	SIDE SCREENS	POLY1424-PS-BR	Polycarbonate Screen with Permanent Attachment Brackets	14" x 23.5" x 0.25"	261
		POLY1430-PS-BR		14" x 29.5" x 0.25"	285
	FRONT SCREENS	POLY1436-PS-BR		14" x 36" x 0.25"	346
		POLY1442-PS-BR		14" x 42" x 0.25"	394
		POLY1448-PS-BR		14" x 48" x 0.25"	402
		POLY1460-PS-BR		14" x 60" x 0.25"	494
		POLY1472-PS-BR		14" x 72" x 0.25"	565
	SIDE SCREENS	POLY2424-PS-BR		24" x 23.5" x 0.25"	356
		POLY2430-PS-BR		24" x 29.5" x 0.25"	412
	FRONT SCREENS	POLY2436-PS-BR		24" x 36" x 0.25"	491
		POLY2442-PS-BR		24" x 42" x 0.25"	594
		POLY2448-PS-BR		24" x 48" x 0.25"	623
		POLY2460-PS-BR		24" x 60" x 0.25"	740
		POLY2472-PS-BR		24" x 72" x 0.25"	853
	SIDE SCREENS	POLY3024-PS-BR		30" x 23.5" x 0.25"	484
		POLY3030-PS-BR		30" x 29.5" x 0.25"	575
	FRONT SCREENS	POLY3036-PS-BR		30" x 36" x 0.25"	635
		POLY3042-PS-BR		30" x 42" x 0.25"	635
		POLY3048-PS-BR		30" x 48" x 0.25"	666
		POLY3060-PS-BR		30" x 60" x 0.25"	1,345
POLY3072-PS-BR		30" x 72" x 0.25"	1,345		
Other Options	TOP ALIGNMENT BRACKETS				
	PLEX-BR-AL-S	180° Aluminum Screen Bracket	4		
	PLEX-BR-AL-L	90° "L" Aluminum Screen Bracket	6		
	PLEX-BR-AL-T	"T" Aluminum Screen Bracket	7		
	PLEX-BR-AL-X	"X" Aluminum Screen Bracket	9		

Note: Top Alignment Brackets maintain alignment and add stability to Clear Plexiglass, Frosted Acrylic, and Polycarbonate screens. Brackets feature 2-way, 3-way, or 4-way connections and are paired based on project requirements.

SAFE-T SCREENS & BARRIERS
Polycarbonate Screens



Free-Standing or Permanent Attachment Screens

HARDWARE	MODEL NUMBER		DESCRIPTION	DIMENSIONS H X L X W	LIST PRICE
	SIDE SCREENS	POLY1424-PS-TMB	Polycarbonate Screen with Permanent Attachment or Optional Double-Sided Tape	14" x 23.5" x 0.25"	287
		POLY1430-PS-TMB		14" x 29.5" x 0.25"	311
	FRONT SCREENS	POLY1436-PS-TMB		14" x 36" x 0.25"	372
		POLY1442-PS-TMB		14" x 42" x 0.25"	420
		POLY1448-PS-TMB		14" x 48" x 0.25"	428
		POLY1460-PS-TMB		14" x 60" x 0.25"	533
		POLY1472-PS-TMB		14" x 72" x 0.25"	604
	SIDE SCREENS	POLY2424-PS-TMB		24" x 23.5" x 0.25"	382
		POLY2430-PS-TMB		24" x 29.5" x 0.25"	438
	FRONT SCREENS	POLY2436-PS-TMB		24" x 36" x 0.25"	517
		POLY2442-PS-TMB		24" x 42" x 0.25"	633
		POLY2448-PS-TMB		24" x 48" x 0.25"	662
		POLY2460-PS-TMB		24" x 60" x 0.25"	779
		POLY2472-PS-TMB		24" x 72" x 0.25"	892
	SIDE SCREENS	POLY3024-PS-TMB		30" x 23.5" x 0.25"	510
		POLY3030-PS-TMB		30" x 29.5" x 0.25"	601
	FRONT SCREENS	POLY3036-PS-TMB		30" x 36" x 0.25"	674
		POLY3042-PS-TMB		30" x 42" x 0.25"	674
		POLY3048-PS-TMB		30" x 48" x 0.25"	705
		POLY3060-PS-TMB		30" x 60" x 0.25"	1,397
POLY3072-PS-TMB		30" x 72" x 0.25"	1,397		
Other Options	TAPE		Heavy-Duty Double-Sided Tape		18
	TOP ALIGNMENT BRACKETS				
	PLEX-BR-AL-S		180° Aluminum Screen Bracket		4
	PLEX-BR-AL-L		90° "L" Aluminum Screen Bracket		6
	PLEX-BR-AL-T		"T" Aluminum Screen Bracket		7
	PLEX-BR-AL-X		"X" Aluminum Screen Bracket		9

Note: Top Alignment Brackets maintain alignment and add stability to Clear Plexiglass, Frosted Acrylic, and Polycarbonate screens. Brackets feature 2-way, 3-way, or 4-way connections and are paired based on project requirements.

SAFE-T SCREENS & BARRIERS
Polycarbonate Screens



Worksurface Screens with Removable C-Clamp

HARDWARE	MODEL NUMBER		DESCRIPTION	DIMENSIONS H X L X W	LIST PRICE
	SIDE SCREENS	POLY1424-PS-C-BR	Polycarbonate Screen with C-Clamp Attachment	14" x 23.5" x 0.25"	382
		POLY1430-PS-C-BR		14" x 29.5" x 0.25"	406
	FRONT SCREENS	POLY1436-PS-C-BR		14" x 36" x 0.25"	467
		POLY1442-PS-C-BR		14" x 42" x 0.25"	515
		POLY1448-PS-C-BR		14" x 48" x 0.25"	523
		POLY1460-PS-C-BR		14" x 60" x 0.25"	615
		POLY1472-PS-C-BR		14" x 72" x 0.25"	686
	SIDE SCREENS	POLY2424-PS-C-BR		24" x 23.5" x 0.25"	477
		POLY2430-PS-C-BR		24" x 29.5" x 0.25"	533
	FRONT SCREENS	POLY2436-PS-C-BR		24" x 36" x 0.25"	612
		POLY2442-PS-C-BR		24" x 42" x 0.25"	715
		POLY2448-PS-C-BR		24" x 48" x 0.25"	744
		POLY2460-PS-C-BR		24" x 60" x 0.25"	861
		POLY2472-PS-C-BR		24" x 72" x 0.25"	974
	SIDE SCREENS	POLY3024-PS-C-BR		30" x 23.5" x 0.25"	605
		POLY3030-PS-C-BR		30" x 29.5" x 0.25"	696
	FRONT SCREENS	POLY3036-PS-C-BR		30" x 36" x 0.25"	756
		POLY3042-PS-C-BR		30" x 42" x 0.25"	756
		POLY3048-PS-C-BR		30" x 48" x 0.25"	787
		POLY3060-PS-C-BR		30" x 60" x 0.25"	1,466
POLY3072-PS-C-BR		30" x 72" x 0.25"	1,466		
Other Options	TOP ALIGNMENT BRACKETS				
	PLEX-BR-AL-S	180° Aluminum Screen Bracket	4		
	PLEX-BR-AL-L	90° "L" Aluminum Screen Bracket	6		
	PLEX-BR-AL-T	"T" Aluminum Screen Bracket	7		
	PLEX-BR-AL-X	"X" Aluminum Screen Bracket	9		

Note: Top Alignment Brackets maintain alignment and add stability to Clear Plexiglass, Frosted Acrylic, and Polycarbonate screens. Brackets feature 2-way, 3-way, or 4-way connections and are paired based on project requirements.

SAFE-T SCREENS & BARRIERS
Polycarbonate Screens



Free-Standing Screens for Worksurfaces and Cubicles

HARDWARE	MODEL NUMBER	DESCRIPTION	DIMENSIONS H X L X W	LIST PRICE	
	SIDE SCREENS	POLY1424-PS-FOOT	14" x 23.5" x 0.25"	382	
		POLY1430-PS-FOOT	14" x 29.5" x 0.25"	406	
	FRONT SCREENS	POLY1436-PS-FOOT	Polycarbonate Screen with Free-Standing Foot	14" x 36" x 0.25"	467
		POLY1442-PS-FOOT		14" x 42" x 0.25"	515
		POLY1448-PS-FOOT		14" x 48" x 0.25"	523
		POLY1460-PS-FOOT		14" x 60" x 0.25"	615
		POLY1472-PS-FOOT		14" x 72" x 0.25"	686
	SIDE SCREENS	POLY2424-PS-FOOT		24" x 23.5" x 0.25"	477
		POLY2430-PS-FOOT		24" x 29.5" x 0.25"	533
	FRONT SCREENS	POLY2436-PS-FOOT		24" x 36" x 0.25"	612
		POLY2442-PS-FOOT		24" x 42" x 0.25"	715
		POLY2448-PS-FOOT		24" x 48" x 0.25"	744
		POLY2460-PS-FOOT	24" x 60" x 0.25"	861	
		POLY2472-PS-FOOT	24" x 72" x 0.25"	974	
	SIDE SCREENS	POLY3024-PS-FOOT	30" x 23.5" x 0.25"	605	
		POLY3030-PS-FOOT	30" x 29.5" x 0.25"	696	
	FRONT SCREENS	POLY3036-PS-FOOT	30" x 36" x 0.25"	756	
		POLY3042-PS-FOOT	30" x 42" x 0.25"	756	
		POLY3048-PS-FOOT	30" x 48" x 0.25"	787	
		POLY3060-PS-FOOT	30" x 60" x 0.25"	1,466	
POLY3072-PS-FOOT		30" x 72" x 0.25"	1,466		
Other Options	MAGNETS	Magnets		91	
	TAPE	Heavy-Duty Double-Sided Tape		18	
	TOP ALIGNMENT BRACKETS				
	PLEX-BR-AL-S	180° Aluminum Screen Bracket		4	
	PLEX-BR-AL-L	90° "L" Aluminum Screen Bracket		6	
	PLEX-BR-AL-T	"T" Aluminum Screen Bracket		7	
	PLEX-BR-AL-X	"X" Aluminum Screen Bracket		9	

Note: Top Alignment Brackets maintain alignment and add stability to Clear Plexiglass, Frosted Acrylic, and Polycarbonate screens. Brackets feature 2-way, 3-way, or 4-way connections and are paired based on project requirements.

Worksurface Screens with Permanent Attachment and Free-Standing Screens can be used to extend cubicle panel height. Use strong magnets, or heavy-duty double-sided tape to avoid cubicle cap damage.

SAFE-T SCREENS & BARRIERS
Polycarbonate Screens

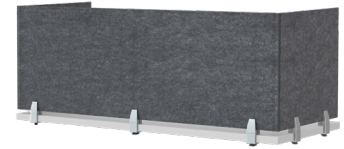


Screens for Cubicle Panels with U-Brackets

HARDWARE	MODEL NUMBER	DESCRIPTION	DIMENSIONS H X L X W	LIST PRICE
	SIDE SCREENS	POLY1424-PS-U-BR	14" x 23.5" x 0.25"	473
		POLY1430-PS-U-BR	14" x 29.5" x 0.25"	497
	FRONT SCREENS	POLY1436-PS-U-BR	14" x 36" x 0.25"	558
		POLY1442-PS-U-BR	14" x 42" x 0.25"	606
		POLY1448-PS-U-BR	14" x 48" x 0.25"	614
		POLY1460-PS-U-BR	14" x 60" x 0.25"	706
		POLY1472-PS-U-BR	14" x 72" x 0.25"	777
	SIDE SCREENS	POLY2424-PS-U-BR	24" x 23.5" x 0.25"	568
		POLY2430-PS-U-BR	24" x 29.5" x 0.25"	624
	FRONT SCREENS	POLY2436-PS-U-BR	24" x 36" x 0.25"	703
		POLY2442-PS-U-BR	24" x 42" x 0.25"	806
		POLY2448-PS-U-BR	24" x 48" x 0.25"	835
		POLY2460-PS-U-BR	24" x 60" x 0.25"	952
		POLY2472-PS-U-BR	24" x 72" x 0.25"	1,065
	SIDE SCREENS	POLY3024-PS-U-BR	30" x 23.5" x 0.25"	696
		POLY3030-PS-U-BR	30" x 29.5" x 0.25"	787
	FRONT SCREENS	POLY3036-PS-U-BR	30" x 36" x 0.25"	847
		POLY3042-PS-U-BR	30" x 42" x 0.25"	847
		POLY3048-PS-U-BR	30" x 48" x 0.25"	878
		POLY3060-PS-U-BR	30" x 60" x 0.25"	1,557
POLY3072-PS-U-BR		30" x 72" x 0.25"	1,557	
Other Options	U-BR-XL	Up-charge for Extra Large U-Brackets for 2.75" - 4.75" Wide Panels		242
	TOP ALIGNMENT BRACKETS			
	PLEX-BR-AL-S	180° Aluminum Screen Bracket		4
	PLEX-BR-AL-L	90° "L" Aluminum Screen Bracket		6
	PLEX-BR-AL-T	"T" Aluminum Screen Bracket		7
	PLEX-BR-AL-X	"X" Aluminum Screen Bracket		9

Note: Top Alignment Brackets maintain alignment and add stability to Clear Plexiglass, Frosted Acrylic, and Polycarbonate screens. Brackets feature 2-way, 3-way, or 4-way connections and are paired based on project requirements.

PET Screens



Worksurface and Cubicle Screens - Permanent Attachment

[CONFIGURE & PRICE](#)

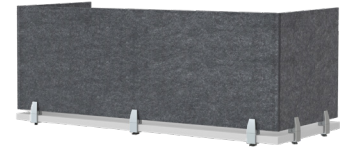
HARDWARE	MODEL NUMBER		DESCRIPTION	DIMENSIONS H x L x W	LIST PRICE
	SIDE SCREENS	PET1424-PS-BR	PET Screen with Permanent Attachment Brackets	13.75" x 22" x 0.5"	251
		PET1430-PS-BR		13.75" x 28" x 0.5"	337
	FRONT SCREENS	PET1448-PS-BR		13.75" x 48" x 0.5"	391
		PET1460-PS-BR		13.75" x 60" x 0.5"	533
		PET1472-PS-BR		13.75" x 72" x 0.5"	590
	SIDE SCREENS	PET2424-PS-BR		23.75" x 22" x 0.5"	388
		PET2430-PS-BR		23.75" x 28" x 0.5"	478
	FRONT SCREENS	PET2448-PS-BR		23.75" x 48" x 0.5"	537
		PET2460-PS-BR		23.75" x 60" x 0.5"	740
		PET2472-PS-BR		23.75" x 72" x 0.5"	790

Free-Standing or Permanent Attachment Screens

[CONFIGURE & PRICE](#)

HARDWARE	MODEL NUMBER		DESCRIPTION	DIMENSIONS H x L x W	LIST PRICE	
	SIDE SCREENS	PET1424-PS-TMB	PET Screen with Permanent Attachment or Optional Double-Sided Tape	13.75" x 22" x 0.5"	277	
		PET1430-PS-TMB		13.75" x 28" x 0.5"	363	
	FRONT SCREENS	PET1448-PS-TMB		13.75" x 48" x 0.5"	417	
		PET1460-PS-TMB		13.75" x 60" x 0.5"	572	
		PET1472-PS-TMB		13.75" x 72" x 0.5"	629	
	SIDE SCREENS	PET2424-PS-TMB		23.75" x 22" x 0.5"	414	
		PET2430-PS-TMB		23.75" x 28" x 0.5"	504	
	FRONT SCREENS	PET2448-PS-TMB		23.75" x 48" x 0.5"	576	
		PET2460-PS-TMB		23.75" x 60" x 0.5"	779	
		PET2472-PS-TMB		23.75" x 72" x 0.5"	829	
	Other Options	TAPE		Heavy-Duty Double-Sided Tape		18

PET Screens



Worksurface Screens with Removable C-Clamp

[CONFIGURE & PRICE](#)

HARDWARE	MODEL NUMBER		DESCRIPTION	DIMENSIONS H x L x W	LIST PRICE
	SIDE SCREENS	PET1424-PS-C-BR	PET Screen with C-Clamp Attachment	13.75" x 22" x 0.5"	372
		PET1430-PS-C-BR		13.75" x 28" x 0.5"	458
	FRONT SCREENS	PET1448-PS-C-BR		13.75" x 48" x 0.5"	512
		PET1460-PS-C-BR		13.75" x 60" x 0.5"	654
		PET1472-PS-C-BR		13.75" x 72" x 0.5"	711
	SIDE SCREENS	PET2424-PS-C-BR		23.75" x 22" x 0.5"	509
		PET2430-PS-C-BR		23.75" x 28" x 0.5"	599
	FRONT SCREENS	PET2448-PS-C-BR		23.75" x 48" x 0.5"	658
		PET2460-PS-C-BR		23.75" x 60" x 0.5"	861
		PET2472-PS-C-BR		23.75" x 72" x 0.5"	911

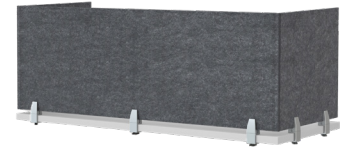
Free-Standing Screens for Worksurfaces and Cubicles

[CONFIGURE & PRICE](#)

HARDWARE	MODEL NUMBER		DESCRIPTION	DIMENSIONS H x L x W	LIST PRICE
	SIDE SCREENS	PET1424-PS-FOOT	PET Screen with Free-Standing Foot	13.75" x 22" x 0.5"	372
		PET1430-PS-FOOT		13.75" x 28" x 0.5"	458
	FRONT SCREENS	PET1448-PS-FOOT		13.75" x 48" x 0.5"	512
		PET1460-PS-FOOT		13.75" x 60" x 0.5"	654
		PET1472-PS-FOOT		13.75" x 72" x 0.5"	711
	SIDE SCREENS	PET2424-PS-FOOT		23.75" x 22" x 0.5"	509
		PET2430-PS-FOOT		23.75" x 28" x 0.5"	599
	FRONT SCREENS	PET2448-PS-FOOT		23.75" x 48" x 0.5"	658
		PET2460-PS-FOOT		23.75" x 60" x 0.5"	861
		PET2472-PS-FOOT		23.75" x 72" x 0.5"	911
Other Options	MAGNETS		Magnets		91
	TAPE		Heavy-Duty Double-Sided Tape		18

Worksurface Screens with Permanent Attachment and Free-Standing Screens can be used to extend cubicle panel height. Use strong magnets, or heavy-duty double-sided tape to avoid cubicle cap damage.

PET Screens



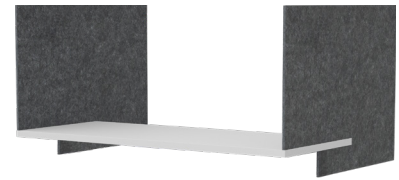
Screens for Cubicle Panels with U-Brackets

[CONFIGURE & PRICE](#)

HARDWARE	MODEL NUMBER		DESCRIPTION	DIMENSIONS H x L x W	LIST PRICE	
	SIDE SCREENS	PET1424-PS-U-BR	PET Screen with U-Bracket for 1.875" - 2.75 Wide Panels	13.75" x 22" x 0.5"	463	
		PET1430-PS-U-BR		13.75" x 28" x 0.5"	549	
	FRONT SCREENS	PET1448-PS-U-BR		13.75" x 48" x 0.5"	603	
		PET1460-PS-U-BR		13.75" x 60" x 0.5"	745	
		PET1472-PS-U-BR		13.75" x 72" x 0.5"	802	
	SIDE SCREENS	PET2424-PS-U-BR		23.75" x 22" x 0.5"	600	
		PET2430-PS-U-BR		23.75" x 28" x 0.5"	690	
	FRONT SCREENS	PET2448-PS-U-BR		23.75" x 48" x 0.5"	749	
		PET2460-PS-U-BR		23.75" x 60" x 0.5"	952	
		PET2472-PS-U-BR		23.75" x 72" x 0.5"	1,002	
	Other Options	U-BR-XL		Up-charge for Extra Large U-Brackets for 2.75" - 4.75" Wide Panels	242	

SAFE-T SCREENS & BARRIERS

PET Screens



HARDWARE	MODEL NUMBER	DESCRIPTION	DIMENSIONS H x L x W	LIST PRICE
----------	--------------	-------------	-------------------------	------------

Privacy/Modesty Screens

CONFIGURE & PRICE

	PET2448-PS/MP	PET Privacy/Modesty Screen with Permanent Attachment	23.75" x 48" x 0.5"	491
	PET2460-PS/MP		23.75" x 60" x 0.5"	715
	PET2472-PS/MP		23.75" x 72" x 0.5"	766

Modesty Panels

CONFIGURE & PRICE

	PET-1048-MP	PET Modesty Panel	10" x 48" x 0.5"	311
	PET-1060-MP		10" x 60" x 0.5"	487
	PET-1072-MP		10" x 72" x 0.5"	542

Sliding Desk Divider

CONFIGURE & PRICE

	PET2424-EXT	PET Sliding Desk Divider Screen for 24"D Worksurface, 24" above surface	30" x 42" x 1"	1,021
	PET2430-EXT	PET Sliding Desk Divider Screen for 30"D Worksurface, 24" above surface	30" x 48" x 1"	1,041



WARRANTY POLICY



WARRANTY POLICY

WARRANTY

May 15, 2020

Customer Service:



888.705.0777



customerservice@specialt.net

CONTACT INFORMATION

Warranty:



888.705.0777



warranty@specialt.net

Wellness and Privacy Screens: Clear Plexiglass, Frosted Acrylic, and PET Wellness and Privacy Screens are warranted for 10 years from the date of delivery against defects in materials or workmanship, subject to the limitations exclusions, and other provisions detailed below. This limited warranty only applies to the original purchaser. The limited warranty is terminated upon transfer, sale, or modification of the product. In no event shall liability under this warranty exceed the original purchase price. This warranty does not apply to normal wear and tear or damage caused by accident, neglect, abuse, misuse, vandalism, disaster, improper storage, improper cleaning, chemical damage, improper installation, operation, environmental factors, or discoloration due to sunlight or indoor lighting. This warranty does not apply to changes in surface finish due to aging or prolonged exposure to fluids or sun. In the event of repair and/or replacement of any defective product, Special-T does not warrant matching color, texture, or dye lots except within commercially reasonable standards. This warranty is expressly made in lieu of any and all other warranties expressed or implied.

ALL IMPLIED WARRANTIES OF MERCHANTABILITY OR FITNESS FOR A PARTICULAR PURPOSE ARE LIMITED TO THE DURATION OF THIS WARRANTY. EXCEPT FOR THE LIMITED EXPRESS WARRANTIES SET FORTH ABOVE, SPECIAL-T DISCLAIMS ALL OTHER EXPRESS OR IMPLIED WARRANTIES OR CONDITIONS. In no event, shall liability under this warranty exceed the original purchase price. This warranty is expressly made in lieu of any and all other warranties expressed or implied.



TABLES, BASES & ACCESSORIES



11820 Wills Rd, Suite 140,
Alpharetta, GA 30009
888.705.0777

www.SpecialT.net