

## Flip-Top Table Assembly Instructions

### Parts List:

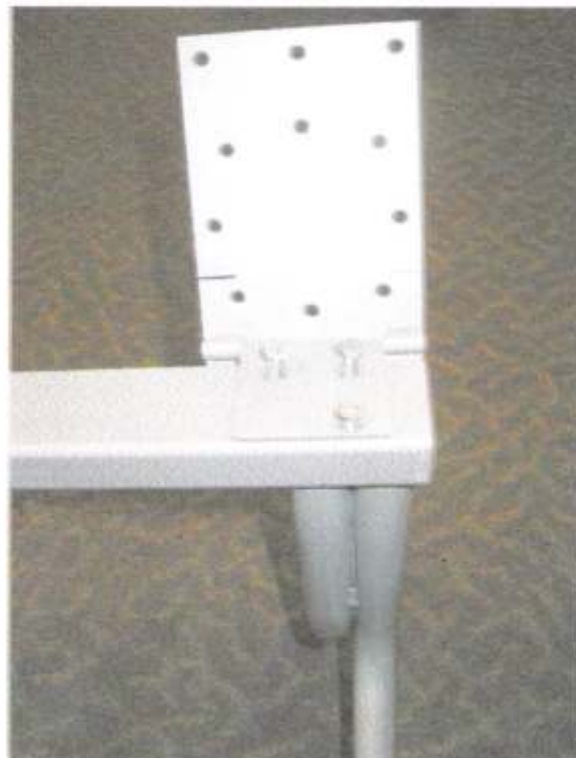
- (10) 3/16" Hex head bolts
- (1) Table top
- (1) Steel box beam
- (2) Side hinges (one left and one right)
- (1) Center hinge with release mechanism
- (4) Skate wheel casters (two locking and two non-locking)  
or
- (4) Adjustable bell glides
- (31) Philips head wood screws



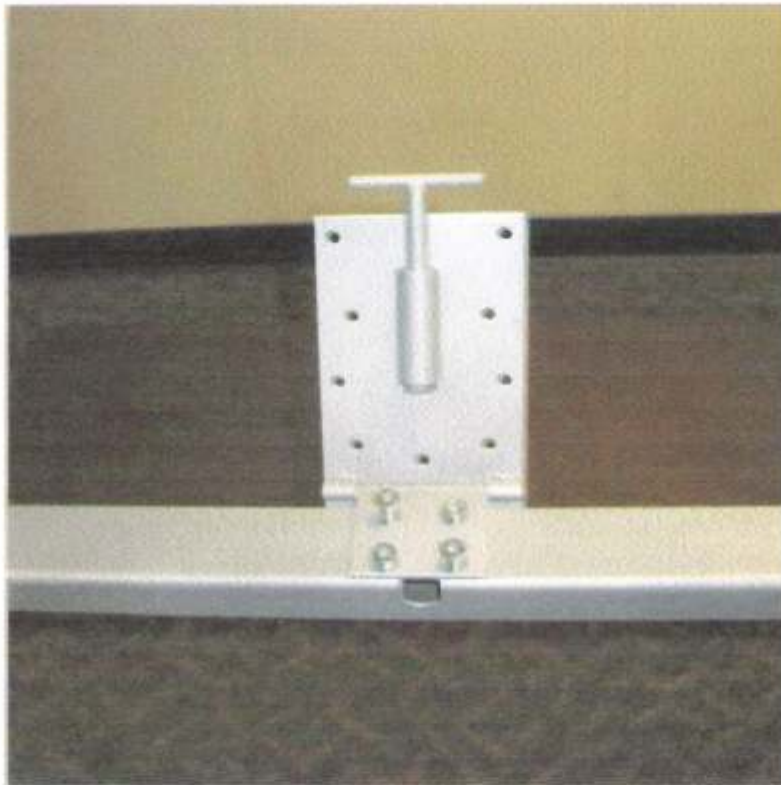
Step 1: Slide legs into the slot on the end of the beam, do not bolt legs at this time.



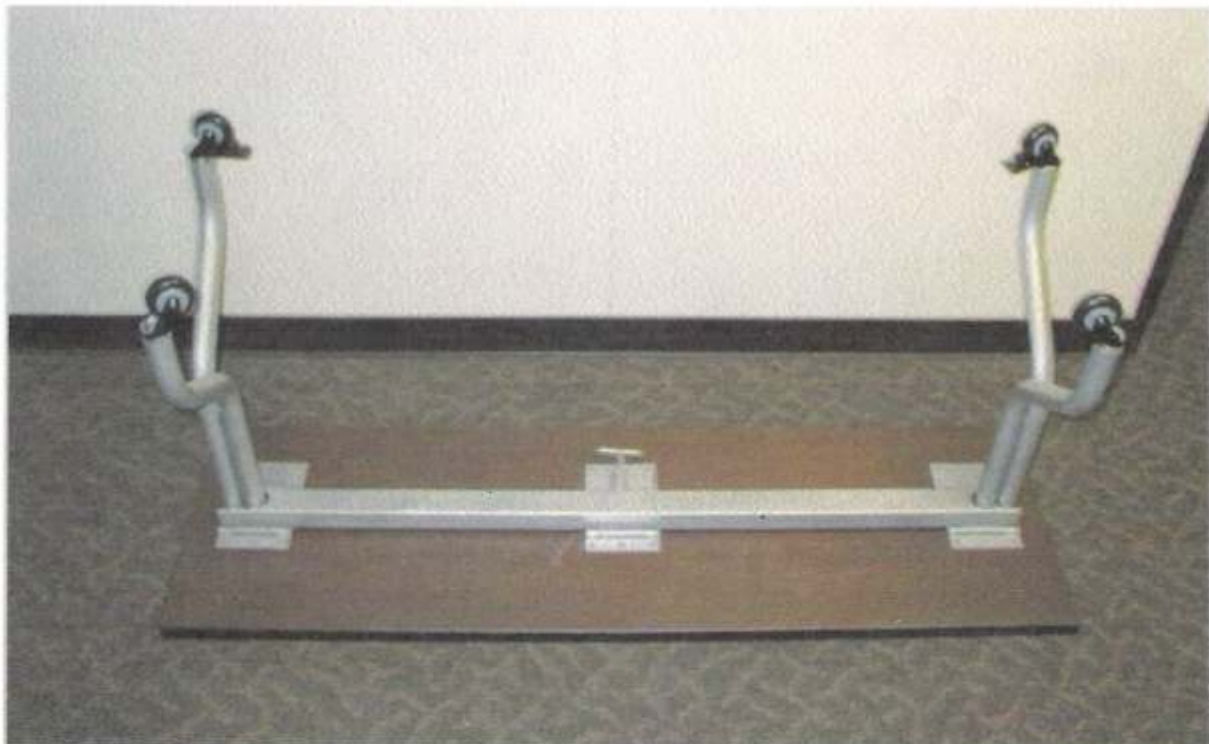
Step 2: Attach hinges and legs to the steel channel. Hinges sit on top of the steel channel. Use a 3/16" Allen wrench and the provided hex head bolts to attach the legs and hinges to the steel beam.



Step 3: Attach the center hinge with release handle to steel beam. Use a 3/16" Allen wrench and the provided hex head bolts to attach the hinge to the steel beam.



Step 4: place table top upside down on the floor, place base assembly upside down on the table top and attach base to the table top using the included Phillips head wood screws. Line up the hinges with the predrilled holes in the under side of the table top.



Step 5: Enjoy your Convertible table!

