



Structure X-Base, Page 38

SPECIAL **T**

# Table Base Catalog

Effective January 2018



## About Us

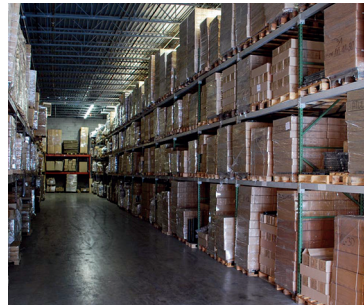
For 20 years, Special-T has been manufacturing the industry's largest selection of tables and table accessories. Our customers include office furniture dealers, table manufacturers, and re-manufacturers. We provide products that are in demand, competitively priced, and exceed customer expectations of quality. We ship in a timely manner and ensure that your product arrives undamaged and attribute our success to the following:

- Stellar customer service
- High-quality products
- The convenience of a comprehensive and easy-to-use online configurator at [www.specialt.net](http://www.specialt.net)



Our Customer Service Team is waiting for your call!

- Personal attention
- Honesty, integrity, follow-through
- We actually do what we promise



Same Day Shipping!

- 24-hour turn-around time
- You're never late on quick turn-around projects
- Over 300,000 bases in stock

## Purpose Statement

Our goal is to develop long term, mutually beneficial relationships using the highest level of values, ethics and unique products. Let us help you by...

- Putting profit back into your projects
- Solving problems with creative solutions.
- Utilizing 'A' Grade tables and bases



More Options - More Choices!

- Highest quality powder-coating finishes
- 20 standard industry colors available
- Stainless Steel and Cast Iron on some items
- Non-standard heights available

# Table Of Contents

## STAINLESS STEEL

Stainless Steel Round Base .....	1
Stainless Steel Square Base .....	2
Stainless Steel Bolt Down Leg .....	3
Stainless Steel Post Leg .....	4

## CAST IRON

Cast Iron X and T Bases .....	5
Cast Iron Round Base .....	6

## CONTEMPORARY

Curve U-Leg .....	7
Dual Column Y-Legs .....	8
Triangular Bases .....	9

## ARCHED

Arched Single Column T-Legs .....	10
Arches Dual Column T-Legs .....	11
Arched Single Column X-Base .....	12

## POST

Single Column Post Legs .....	13
1.5" Post Legs .....	14
Tapered Post Leg .....	15
Square Post Leg .....	16
Reveal Leg .....	17
Bolt Down Leg .....	18

## TRADITIONAL

Bolted Single Column T-Legs .....	19
Welded Single Column T-Legs .....	20
EZ-Roll T-Legs .....	21
Dual Column T-legs .....	22
Single Column C-Legs .....	23
Dual Column C-Legs .....	24
Dual Column H-Legs .....	25
Single Column X-Bases .....	26
Multi Column X-Bases .....	27
4 and 5 Column X-Bases .....	28

## SIENNA SERIES

Sienna Round and Square Bases .....	29
Sienna X-Bases .....	30
Sienna Boomerang Base .....	31
Sienna Rectangle Base .....	32
Sienna T-Leg ans C-Leg .....	33

## STRUCTURE SERIES

Square End Base .....	34
Square H-Leg .....	35
Structure T-Leg and C-Leg .....	36
Structure Post Leg .....	37
Structure X-Base .....	38
Structure Cube .....	39

HEIGHT ADJUSTABLE

Spring Clip Height Adjustable Bases ..... 40  
Patriot Electric Height Adjustable Base ..... 41

FOLDING

Folding Legs ..... 42

FLIP AND NEST

Kingston Flip Base ..... 43  
Convertible Base ..... 44  
Transform-2 Base ..... 45

ACCESSORIES

Perforated Steel Modesty Panel ..... 46  
Acrylite® Modest Panel and Privacy Screen ..... 47  
Laminate Modesty Panel ..... 48  
Workstation Self Riser ..... 49  
Wire Management and Table Connectors ..... 50  
Casters and Glides ..... 51  
Table Cart ..... 52

Tops

Tops ..... 53

IMPORTANT INFORMATION

..... 54

METAL FINISHES

..... Inside Back Cover



# Stainless Steel Round Base

The stainless steel Round Base is composed of 304 grade stainless steel. The high quality, beautiful finish and style make this base perfect for office, restaurant and hospitality applications. Available in office and bar heights.

## Features:

- UNIT HEIGHT: 27.75" and 40.75". SSP720-RB is available only in 27.75" height
- MOUNTING PLATE: 13.75" x 13.75" square pressed steel
- COLUMN: 3" diameter; 1.5 mm thick; 304 grade stainless steel
- FLOOR PLATE: 17-23/32" x 17-23/32", 22-27/32" x 22-27/32", 28-23/64" x 28-23/64"; cover plate is 1mm thick 304 grade Sunray Brushed Stainless Steel.
- LEVELING GLIDES: 3/4" diameter plastic for leveling on uneven floors
- FINISH: Brushed Stainless Steel
- METHOD OF ASSEMBLY: bolted construction
- PACKAGING: SSP450-RB are packed in 3 boxes, SSP720-RB are packaged in 5 boxes.



SSP450-RB



SSP720-RB

Part #	Floor Plate Diameter	Unit Height	Recommended Top Size	Net Weight	List Price
SSP450-RB	17-23/32"	27.75"	≤ 32" Rd. ≤ 28" Sq.	34 lbs.	\$480
SSP450-RB-42	17-23/32"	40.75"	≤ 30" Rd. ≤ 24" Sq.	36 lbs.	\$538
SSP580-RB	22-27/32"	27.75"	≤ 40" Rd. ≤ 36" Sq.	70 lbs.	\$666
SSP580-RB-42	22-27/32"	40.75"	≤ 36" Rd. ≤ 32" Sq.	72 lbs.	\$724
SSP720-RB (3 column)	28-23/64"	27.75"	≤ 60" Rd. ≤ 54" Sq.	82 lbs.	\$633

## Stainless Steel Square Base

Classic design meets beautiful finish in this stainless steel table base. Our Square Base is composed of 304 grade stainless steel. It is perfect for architectural, office, restaurant and hospitality applications and available in office and bar heights.

### Features:

- UNIT HEIGHT: 27.75" and 40.75".
- MOUNTING PLATE: 13.75" x 13.75" square pressed steel
- COLUMN: 3" diameter; 1.5 mm thick; 304 grade stainless steel
- FLOOR PLATE: 17-23/32" x 17-23/32", 22-27/32" x 22-27/32";  
cover plate is 1mm thick 304 grade linear Sunray Brushed Stainless Steel.
- LEVELING GLIDES: 3/4" diameter plastic for leveling on uneven floors
- FINISH: Brushed Stainless Steel
- METHOD OF ASSEMBLY: bolted construction
- PACKAGING: bases are packed in 3 boxes



SSP450-SB



Part #	Floor Plate	Unit Height	Recommended Top Size	Net Weight	List Price
SSP450-SB	17-23/32"	27.75"	≤ 32" Rd. ≤ 28" Sq.	39 lbs.	\$504
SSP450-SB-42	17-23/32"	40.75"	≤ 30" Rd. ≤ 24" Sq.	41 lbs.	\$562
SSP580-SB	22-27/32"	27.75"	≤ 40" Rd. ≤ 36" Sq.	59 lbs.	\$689
SSP580-SB-42	22-27/32"	40.75"	≤ 36" Rd. ≤ 32" Sq.	61 lbs.	\$747



# Stainless Steel Bolt Down Leg

This stylish yet heavy duty base provides form and function in bolt down applications. It is perfect for office or hospitality settings. The base bolts to the floor with 8" diameter floor plate and has 3" column diameter.

## Features:

- UNIT HEIGHT: 27.75" and 40.75"
- MOUNTING PLATE: 13.75" x 13.75" square pressed steel
- COLUMN: 3" diameter; 1.5 mm thick; 304 grade stainless steel
- FLOOR PLATE: 8" diameter; cover plate is 1mm thick 304 grade Sunray Brushed Stainless Steel.
- FINISH: Brushed Stainless Steel
- METHOD OF ASSEMBLY: bolted construction
- PACKAGING: bases are packaged in 2 boxes.



SSBD



Part #	Unit Height	Column Diameter	Recommended Top Size	Net Weight	List Price
SSBD	27.75"	3"	≤ 24" Rd. ≤ 24" Sq.	16 lbs.	\$237
SSBD-42	40.75"	3"	≤ 24" Rd. ≤ 24" Sq.	22 lbs.	\$295

# Stainless Steel Post Leg

Our Stainless Steel Post Leg is crafted from high quality stainless steel.

## Features:

- UNIT HEIGHT: 27.75", 34.75" and 40.75".
- MOUNTING PLATE: 5.125" x 5.125", 2.5 mm pressed milled steel
- COLUMN: 3" diameter; 1.5 mm thick; 304 grade stainless steel
- LEVELING GLIDES: 3.25" x .75" black plastic with 1/2" of adjustment
- FINISH: Brushed Stainless Steel
- METHOD OF ASSEMBLY: bolted construction
- PACKAGING: bases are packaged 2 per box, priced individually.



SS29-PL



Part #	Unit Height	Column Diameter	Net Weight	List Price (Each)
SS29-PL	27.75"	3"	6 lbs.	\$139
SS36-PL	34.75"	3"	7 lbs.	\$167
SS42-PL	40.75"	3"	8 lbs.	\$197



# Cast Iron X and T Bases

The Cast Iron X and T Bases are fabricated from a 14 gauge tubular steel column and a heavy duty cast iron floor base. Milled steel threaded rod and nut are used for assembly.

### Features:

- UNIT HEIGHT: 27.75" and 40.75"
- WELDED MOUNTING PLATE: 9.5" x 9.5" 2.5mm pressed milled steel
- COLUMN: 3" diameter
- LEVELING GLIDES: 1-1/8" diameter plastic for leveling on uneven floors.
- FINISH: Black Sandtex
- METHOD OF ASSEMBLY: bolted construction
- PACKAGING: floor plate and column are packaged in 2 boxes.



WXL-2222-42  
With Foot Ring



WXL-2222

### Options:

- FOOT RING: 16" diameter, 12" high foot ring is available for 40.75" high WXL bases (Black powder coat finish).
- SELF LEVELING GLIDES (SLG-1): See page 51 for more information. Add \$60 List for WXL base and \$30 List for WTL base.



WTL-24

Part #	Base Spread	Unit Height	Recommended Top Size	Net Weight	List Price (Each)
WXL-2222	22/22"	27.75"	≤ 30" Rd. or ≤ 24" Sq.	15 lbs.	\$99
WXL-2222-42	22/22"	40.75"	≤ 24" Rd. or ≤ 24" Sq.	19 lbs.	\$166
WXL-2230	22/30"	27.75"	24" x 36"	21 lbs.	\$110
WXL-2230-42	22/30"	40.75"	24" x 36"	25 lbs.	\$177
WXL-3030	30/30"	27.75"	≤ 36" Rd. or ≤ 36" Sq.	26 lbs.	\$123
WXL-3030-42	30/30"	40.75"	≤ 36" Rd. or ≤ 36" Sq..	29 lbs.	\$190
WXL-3333	33/33"	27.75"	≤ 42" Rd. or ≤ 36" Sq.	27 lbs.	\$147
WXL-3333-42	33/33"	40.75"	≤ 36" Rd. or ≤ 36" Sq.	31 lbs.	\$214
WTL-24	22"	27.75"	24" x 30"	13 lbs.	\$74
WTL-2442	22"	40.75"	24" x 30"	17 lbs.	\$141
FOOTRING-3		12"		6 lbs.	\$67

# Cast Iron Round Base

The Cast Iron Round Base is composed of a column made from 14 gauge tubular steel and a heavy duty cast iron floor plate. Milled steel threaded rod and nut are used for assembly.

## Features:

- UNIT HEIGHT: 27.75" and 40.75".
- WELDED MOUNTING PLATE: 9.5" x 9.5" 2.5mm pressed milled steel
- LEVELING GLIDES: 1-1/8" diameter plastic for leveling on uneven floors.
- FINISH: Black Sandtex
- METHOD OF ASSEMBLY: bolted construction
- PACKAGING: floor plate and column are packaged separately

## Options:

- FOOT RING: 16" diameter for 3" column, 19.5" diameter for 4" column, 12" high, for 40.75" high bases (Black powder coat finish).
- SELF LEVELING GLIDES (SLG-1): See page 51 for more information. Add \$60.



W24RB-42  
with foot ring



W30RB

Part #	Floor Plate	Column Diameter	Unit Height	Recommended Top Size	Net Weight	List Price
W18RB	18"	3"	27.75"	≤ 30" Rd. or ≤ 24" Sq.	22 lbs.	\$123
W18RB-42	18"	3"	40.75"	≤ 26" Rd. or ≤ 22" Sq.	26 lbs.	\$190
W24RB	24"	4"	27.75"	≤ 42" Rd. or ≤ 36" Sq.	40 lbs.	\$197
W24RB-42	24"	4"	40.75"	≤ 36" Rd. or ≤ 32" Sq.	45 lbs.	\$264
W30RB	30"	4"	27.75"	≤ 54" Rd. or ≤ 48" Sq.	58 lbs.	\$277
W30RB-42	30"	4"	40.75"	≤ 48" Rd. or ≤ 42" Sq.	62 lbs.	\$344
FOOTRING-4 (Use for 4" dia. column)		19.5"	12"		6 lbs.	\$71
FOOTRING-3 (Use for 3" dia. column)		16"	12"		6 lbs.	\$67



# Curved U-Leg

Fabricated 14 gauge 1.5" diameter tubular steel with threaded inserts for glides. Welded construction.

**Features:**

- UNIT HEIGHT: 27.75"
- WELDED MOUNTING PLATE: 5"x 8"x 7/32"
- LEVELING GLIDES: 1-3/8" diameter nylon glide
- FINISH: stock color is Black. See inside of Back Cover for additional color options.
- PACKAGING: bases are packed 2 per box, priced individually.



UL-24



Part #	Unit Height	Base Spread	Recommended Top Depth	Net Weight	List Price (Each)
UL-24	27.75"	22"	24" - 28"	8 lbs.	\$160
UL-30	27.75"	26"	30" - 36"	9 lbs.	\$172

# Dual Column Y-Legs

Fabricated 14 gauge 1.5" diameter tubular columns bent and welded together.

**Features:**

- UNIT HEIGHT: 27.75"
- WELDED MOUNTING PLATE: 5"x 8"x 7/32"
- BELL GLIDES: 2-3/8" diameter nylon glide in 2.5" high steel extender.
- CASTERS: 3" skate wheel locking casters with black core, 112 lbs. loading capacity.
- FINISH: stock color is Black. See inside of Back Cover for additional color options.
- METHOD OF ASSEMBLY: bolted construction
- PACKAGING: bases are packed 2 per box, priced individually.



YL-24



YL-24-SC



Choose between  
Skate Casters (-SC)  
or Bell Glide  
options

Part #	Base Spread	Recommended Top Depth	Net Weight	List Price (Each)
YL-24	23.5"	24" - 28"	8 lbs.	\$160
YL-24-SC with skate casters	23.5"	24" - 28"	8 lbs.	\$160
YL-30	27.5"	30" - 36"	12 lbs.	\$172
YL-30-SC with skate casters	27.5"	30" - 36"	12 lbs.	\$172

# Triangular Bases

Fabricated 14 gauge tubular steel with welded cross members.

### Features:

- UNIT HEIGHT: 27.75" and 40.75"
- WELDED MOUNTING PLATE: (3) 4" x 4"x 7/32" triangle
- FINISH: stock color is Black. See inside of Back Cover for additional color options.
- PACKAGING: floor plate and column are packaged separately

### Options:

- BALLAST: one or two 4 lbs. each. Ballasts can be mounted under a floor plate for more stability.



TRI-8-18TRIP



TRI-8



TRI-842-18TRIP

Part #	Unit Height	Column Diameter	Base Spread	Recommended Top Depth	Net Weight	List Price
TRI-8	27.75"	2"	10"	-	15 lbs.	\$289
TRI-8-42	40.75"	2"	10"	-	20 lbs.	\$351
TRI-8-18TRIP	27.75"	2"	18"	max 30" square	27 lbs.	\$411
TRI-8-22TRIP	27.75"	2"	22"	max 36" square	33 lbs.	\$455
TRI-8-26TRIP	27.75"	2"	26"	max 48" square	46 lbs.	\$515
TRI-842-18TRIP	40.75"	2"	18"	max 30" square	32 lbs.	\$473
TRI-842-22TRIP	40.75"	2"	22"	max 36" square	38 lbs.	\$517
TRI-842-26TRIP	40.75"	2"	26"	max 48" square	53 lbs.	\$577
BALLAST					4 lbs.	\$38

# Arched Single Column T-Legs

Our Arched T-Legs are fabricated from the highest quality 14 gauge tubular steel. The column and arched foot are 2" in diameter. All threaded inserts are welded for maximum strength.

### Features:

- UNIT HEIGHT: 27.75" and 40.75"
- WELDED MOUNTING PLATE: 5"x 8"x 7/32"
- LEVELING GLIDES: 1-3/8" diameter plastic in steel threaded inserts
- FINISH: stock color is Black. See inside of Back Cover for additional color options.
- PACKAGING: bases are packed 2 per box, priced individually.

### Options:

- CASTERS: 3" locking skate casters, each 112 lbs. capacity. Specify -SC. Add \$44 List.
- ADJUSTABLE HEIGHT: see page 40 for more information. Add \$74 List.



1ATL-24



1ATL-24-SC

Part #	Unit Height	Column Diameter	Base Spread	Recommended Top Depth	Net Weight	List Price (Each)
1ATL-18	27.75"	2"	16"	18" - 22"	7 lbs.	\$114
1ATL-1842	40.75"	2"	16"	18" - 22"	9 lbs.	\$157
1ATL-24	27.75"	2"	22"	24" - 28"	7 lbs.	\$117
1ATL-2442	40.75"	2"	22"	24" - 28"	9 lbs.	\$160
1ATL-30	27.75"	2"	26"	28" - 30"	8 lbs.	\$119
1ATL-3042	40.75"	2"	26"	28"-30"	10 lbs.	\$162

# Arched Dual Column T-Legs

This base is fabricated from the highest quality 14 gauge tubular steel. The columns and arched foot are 2" in diameter. All threaded inserts are welded for maximum strength.

### Features:

- UNIT HEIGHT: 27.75"
- LEVELING GLIDES: 1-3/8" diameter plastic with steel threaded inserts
- FINISH: stock color is Black. See inside of Back Cover for additional color options.
- PACKAGING: bases are packed 2 per box, priced individually.



2ATL-24

### Options:

- PERFORATED PANEL: available for additional charge with 2ATL-24 and 2ATL-30. Specify -PI-ATL. Add \$65 List.



2ATL-42

Part #	Unit Height	Column Diameter	Base Spread	Mounting Plate Size	Recommended Top Depth	Net Weight	List Price (Each)
2ATL-24	27.75"	2"	22"	5"x12"	24" - 28"	11 lbs.	\$164
2ATL-30	27.75"	2"	26"	5"x12"	30" - 36"	12 lbs.	\$167
2ATL-42	27.75"	2"	36"	(2) 5"x8" welded	42" - 46"	13 lbs.	\$173
2ATL-48	27.75"	2"	42"	(2) 5"x8" welded	46" - 48"	14 lbs.	\$178



# Arched Single Column X-Base

Our arched X-bases are fabricated from the highest quality 14 gauge tubular steel. The column is 3" and arched feet are 2" in diameter. Mounting plate and all threaded inserts are welded for maximum strength.

**Features:**

- UNIT HEIGHT: 27.75" and 40.75"
- WELDED MOUNTING PLATE: 8"x 8"x 7/32"
- LEVELING GLIDES: 1-3/8" diameter plastic with steel threaded inserts
- FINISH: stock color is Black. See inside of Back Cover for additional color options.
- PACKAGING: base and feet are packaged in one box



1AXL-42

**Options:**

- CASTERS: 3" locking skate casters, each 112 lbs. capacity. Specify -SC. Add \$88 List.
- SELF LEVELING GLIDES (SLG-M8): see page 51 for more information. Add \$60 List.
- CUSTOM HEIGHT: Specify -CUT1 for height <27.75". Add \$46 List. Specify -CUT2 for height >27.75". Add \$112 List.

Part #	Unit Height	Column Diameter	Base Spread	Recommended Top Depth	Net Weight	List Price
1AXL-30	27.75"	3"	26"x 26"	30" - 36"	14 lbs.	\$209
1AXL-3042	40.75"	3"	26"x 26"	30" - 36"	17 lbs.	\$275
1AXL-36	27.75"	3"	32"x 32"	36" - 42"	16 lbs.	\$219
1AXL-3642	40.75"	3"	32"x 32"	36" - 42"	19 lbs.	\$285
1AXL-42	27.75"	3"	38"x 38"	42" - 48"	18 lbs.	\$235
1AXL-4242	40.75"	3"	38"x 38"	42" - 48"	21 lbs.	\$301

# Single Column Post Legs

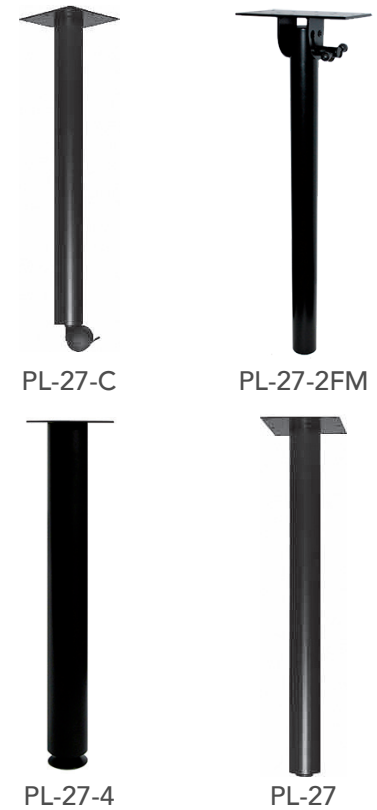
Fabricated 14 gauge steel with threaded inserts for levelers or casters.

### Features:

- UNIT HEIGHT: 27.75" and 40.75"
- MOUNTING PLATE: 4" x 4" x 7/32" or 6" x 6" x 7/32" welded
- LEVELING GLIDES: 1-3/8" diameter plastic with steel threaded inserts. PL-27-4 has a 4" metal glide.
- CASTERS: PL-27-2-C and PL-27-C have a 2" dual wheel locking caster, 112 lbs. capacity.
- FINISH: stock color is Black, PL-27-2 is also available in Metallic Silver. See inside of Back Cover for additional color options.
- PACKAGING: bases are packaged 2 per box. PL-27-2 and PL-27-2-C are packaged 4 per box. PL-27-342 and PL-27-442 are packaged one per box. Priced individually.

### Options:

- CUSTOM HEIGHT: Specify -CUT1 for height <27.75". Add \$46 List. Specify -CUT2 for height >27.75". Add \$89 List.



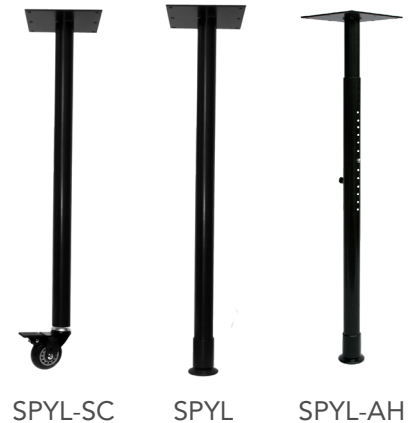
Part #	Unit Height	Column Diameter	Mounting Plate Size	Net Weight	List Price (Each)
PL-27-2	27.75"	2"	4"x 4"	4 lbs.	\$52
PL-27-2-MS metallic silver	27.75"	2"	4"x 4"	4 lbs.	\$52
PL-27-2-C with casters	27.75"	2"	4"x 4"	4 lbs.	\$65
PL-27-2FM folding leg	27.75"	2"	5"x 8"	7 lbs.	\$160
PL-27	27.75"	2-3/8"	6"x 6"	5 lbs.	\$78
PL-27-C with casters	27.75"	2-3/8"	6"x 6"	5 lbs.	\$91
PL-27-3	27.75"	3"	6"x 6"	6 lbs.	\$76
PL-27-342	40.75"	3"	6"x 6"	10 lbs.	\$119
PL-27-4	27.75"	4"	6"x 6"	8 lbs.	\$104
PL-27-442	40.75"	4"	6"x 6"	12 lbs.	\$147

# 1.5" Post Legs

Fabricated 14 gauge steel 1.5" diameter tubular columns.

## Features:

- UNIT HEIGHT: 27.75"
- WELDED MOUNTING PLATE: 4"x 4"x 7/32"
- BELL GLIDE: 2-3/8" diameter nylon glide in 2.5" high steel extender.
- CASTERS: 3" locking skate wheel caster with black core. 112 lbs. capacity.
- ADJUSTABLE HEIGHT: adjustable range is from 24.75" to 34.75". Adjusts in 1" increments by depressing spring clip pin to release the other column for height adjustment. Thumb screw locks column into position.
- FINISH: stock color is Black. See inside of Back Cover for additional color options.
- PACKAGING: bases are packaged 4 per box, priced individually.



Choose between  
Skate Casters (-SC)  
or Bell Glide  
options

Part #	Unit Height	Column Diameter	Mounting Plate Size	Net Weight	List Price (Each)
SPYL	27.75"	1.5"	4"x 4"	4 lbs.	\$75
SPYL-SC with skate caster	27.75"	1.5"	4"x 4"	4 lbs.	\$75
SPYL-AH spring clip adjustable height	27.75"	1.5"	4"x 4"	5 lbs.	\$98

# Tapered Post Leg

Tapered Post Legs are fabricated from 14 gauge tubular steel and is welded for maximum strength and stability.

**Features:**

- UNIT HEIGHT: 27.75"
- WELDED MOUNTING PLATE: 4" x 4" x 7/32"
- LEVELING GLIDES: 2-3/8" diameter plastic with steel threaded inserts.
- FINISH: stock color is Black. See inside of Back Cover for additional color options.
- PACKAGING: bases are packaged 4 per box, priced individually.



TPL



Part #	Unit Height	Column Diameter	Mounting Plate Size	Net Weight	List Price (Each)
TPL	27.75"	2-3/8" top 1-1/4" bottom	4"x 4"	4 lbs.	\$78

## Square Post Leg

Fabricated 14 gauge square steel with threaded inserts for levelers. Post mounts flush with table corner.

### Features:

- UNIT HEIGHT: 27.75" and 40.75"
- WELDED MOUNTING PLATE: 5" x 5" x 7/32"
- LEVELING GLIDES: 2-3/8" diameter plastic with steel threaded inserts.
- CASTERS: SQ-RH-C comes with a 2.5" dual wheel locking casters, 112 lbs. capacity.
- FINISH: stock color is Black. SQ-RH is available in Metallic Silver. See inside of Back Cover for additional color options.
- PACKAGING: bases are packaged 4 per box, priced individually.



SQ-RH



Part #	Unit Height	Column Size	Net Weight	List Price (Each)
SQ-RH	27.75"	2-3/8"	6 lbs.	\$82
SQ-RH-MS Metallic Silver	27.75"	2-3/8"	6 lbs.	\$82
SQ-RH-C with casters	27.75"	2-3/8"	6 lbs.	\$95
SQ-RH-42	40.75"	2-3/8"	9 lbs.	\$125



## Reveal Leg

Fabricated 14 gauge 2" diameter tubular steel with 45 degree support welded to 6" x 6" mounting plate for maximum strength.

### Features:

- UNIT HEIGHT: 27.75"
- WELDED MOUNTING PLATE: 6" x 6" x 7/32" steel
- LEVELING GLIDES: 1-3/8" diameter plastic with steel threaded inserts.
- FINISH: stock color is Black. See inside of Back Cover for additional color options.
- PACKAGING: bases are packaged 2 per box, priced individually.



RL

### Options:

- CUSTOM HEIGHT: Specify -CUT1 for height <27.75". Add \$46 List.



Part #	Unit Height	Column Diameter	Corner Mounting Plate Size	Net Weight	List Price (Each)
RL	27.75"	2"	6"x 6"	6 lbs.	\$116

## Bolt Down Leg

This stylish yet heavy duty base provides form and function in bolt down applications. It is perfect for educational or hospitality settings. The base bolts to the floor with 6" diameter plate and has a 3" column diameter.

### Features:

- UNIT HEIGHT: 27.75", 34.75" and 40.75"
- WELDED MOUNTING PLATE: 10" x 10"
- COLUMN: 3" diameter
- FLOOR PLATE: 6" diameter cover
- FINISH: stock color is Black. See inside of Back Cover for additional color options.
- METHOD OF ASSEMBLY: bolted construction
- PACKAGING: bases are packed in 2 boxes



BD-29



Part #	Unit Height	Column Diameter	Net Weight	List Price
BD-29	27.75"	3"	13 lbs.	\$116
BD-36 counter height	34.75"	3"	14 lbs.	\$159
BD-42 bar height	40.75"	3"	15 lbs.	\$159

## Bolted Single Column T-Legs

Fabricated 14 gauge steel with steel endcaps and threaded inserts for levelers or casters. Bolted construction.

### Features:

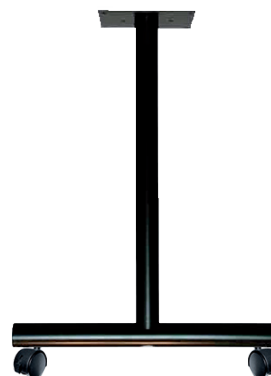
- UNIT HEIGHT: 27.75", 34.75", and 40.75"
- WELDED MOUNTING PLATE: 5" x 8" x 7/32" steel
- LEVELING GLIDES: 1-3/8" diameter plastic with steel threaded inserts.
- FINISH: stock color is Black. See inside of Back Cover for additional color options.
- PACKAGING: bases are packaged 2 per box, priced individually.

### Options:

- CUSTOM HEIGHT: Specify -CUT1 for height <27.75". Add \$46 List. Specify -CUT2 for height >27.75". Add \$89 List.
- BAR HEIGHT: Specify -42 and add \$43 List
- COUNTER HEIGHT: Specify -36 and add \$43 List
- ADJUSTABLE HEIGHT: see page 40 for more information. Add \$74 List.
- CASTERS: 2" dual wheel locking caster, 112 lbs. capacity. Specify -C and add \$26 List.
- SELF LEVELING GLIDES (SLG-M8): See page 50 for more information. Add \$30.
- FOLDING: see page 42 for more information. Add \$170 List.



TL-24



TL-22-C

Part #	Unit Height	Column Diameter	Base Spread	Recommended Top Depth	Net Weight	List Price (Each)
TL-18	27.75"	2"	16"	18" - 20"	7 lbs.	\$122
TL-20	27.75"	2"	18"	20" - 22"	8 lbs.	\$122
TL-22	27.75"	2"	20"	22" - 24"	8 lbs.	\$124
TL-24	27.75"	2"	22"	24" - 28"	8 lbs.	\$124
TL-30	27.75"	2"	26"	28" - 30"	9 lbs.	\$127

## Welded Single Column T-Legs

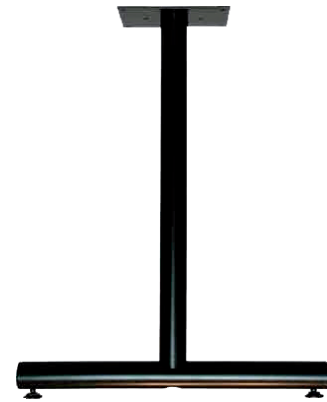
Fabricated 14 gauge steel with steel endcaps and threaded inserts for levelers. Welded construction.

### Features:

- UNIT HEIGHT: 27.75"
- WELDED MOUNTING PLATE: 5" x 5" x 7/32" steel
- LEVELING GLIDES: 1-3/8" diameter plastic with steel threaded inserts.
- FINISH: stock color is Black. See inside of Back Cover for additional color options.
- PACKAGING: bases are packaged 2 per box, priced individually.

### Options:

- SELF LEVELING GLIDES (SLG-M8): See page 51 for more information. Add \$30.



TL-24W



Part #	Column Diameter	Base Spread	Recommended Top Depth	Net Weight	List Price (Each)
TL-18W	2"	16"	18" - 20"	7 lbs.	\$122
TL-24W	2"	22"	24" - 28"	8 lbs.	\$124
TL-30W	2"	26"	28" - 30"	9 lbs.	\$127
TL-36W	2"	30"	30" - 36"	10 lbs.	\$174

# EZ Roll T-Leg

T-Leg with concealed EZ-Roll wheels is stationary or can be mobile when tilted. Fabricated 14 gauge 2" diameter columns with steel endcaps and concealed EZ-Roll wheels.

### Features:

- UNIT HEIGHT: 27.75"
- WELDED MOUNTING PLATE: 5" x 8" x 7/32" steel
- EZ-ROLL WHEELS: 1.5" diameter built-in wheels
- FINISH: stock color is Black. See inside of Back Cover for additional color options.
- PACKAGING: bases are packaged 2 per box, priced individually.

### Options:

- CUSTOM HEIGHT: Specify -CUT1 for height <27.75". Add \$46 List.



TL30-EZ



built-in EZ-Roll wheel



Part #	Column Diameter	Base Spread	Recommended Top Depth	Net Weight	List Price (Each)
TL-18EZ	2"	16"	18" - 22"	7 lbs.	\$152
TL-24EZ	2"	22"	24" - 26"	8 lbs.	\$154
TL-30EZ	2"	26"	28" - 30"	9 lbs.	\$156



# Dual Column T-Legs

Fabricated 14 gauge steel with steel endcaps and threaded inserts for levelers or casters.

## Features:

- UNIT HEIGHT: 27.75", 34.75", and 40.75"
- MOUNTING PLATE: 7/32" steel
- LEVELING GLIDES: 1-3/8" diameter plastic with steel threaded inserts.
- FINISH: stock color is Black. See inside of Back Cover for additional color options.
- PACKAGING: bases are packaged 2 per box, priced individually.

## Options:

- CUSTOM HEIGHT: Specify -CUT1 for height <27.75". Add \$92 List. Specify -CUT2 for height >27.75". Add \$178 List.
- BAR HEIGHT: Specify -42 and add \$86 List.
- COUNTER HEIGHT: Specify -36 and add \$86 List.
- ADJUSTABLE HEIGHT: see page 40 for more information. Add \$148 List.
- CASTERS: 2" dual wheel locking caster, 112 lbs. capacity. Specify -C and add \$26 List.
- SELF LEVELING GLIDES (SLG-M8): See page 51 for more information. Add \$30.
- PERFORATED PANEL: decorative panel snaps between the columns. Available only for 2TL-24 and 2TL-30. Specify -PI-2TL. Add \$65 List.



2TL-30



2TL-30-PI-2TL  
with perforated panel

Part #	Unit Height	Column Diameter	Base Spread	Mounting Plate Size	Recommended Top Depth	Net Weight	List Price (Each)
2TL-24	27.75"	2"	22"	5"x 11" welded	24" - 28"	11 lbs.	\$167
2TL-30	27.75"	2"	26"	5"x 11" welded	30" - 36"	12 lbs.	\$170
2TL-42	27.75"	2"	36"	6"x 16"	42" - 46"	15 lbs.	\$183
2TL-48	27.75"	2"	42"	6"x 16"	48" - 52"	16 lbs.	\$191
2TL-60	27.75"	2-3/8"	42"	6"x 6"	52" - 60"	17 lbs.	\$249

# Single Column C-Legs

Fabricated 14 gauge steel with steel endcaps and threaded inserts for levelers or casters.

## Features:

- UNIT HEIGHT: 27.75", 34.75", and 40.75"
- WELDED MOUNTING PLATE: 5" x 8" x 7/32" steel
- LEVELING GLIDES: 1-3/8" diameter plastic with steel threaded inserts.
- FINISH: stock color is Black. See inside of Back Cover for additional color options.
- PACKAGING: bases are packaged 2 per box, priced individually.

## Options:

- CUSTOM HEIGHT: Specify -CUT1 for height <27.75". Add \$46 List. Specify -CUT2 for height >27.75". Add \$89 List.
- BAR HEIGHT: Specify -42 and add \$43 List.
- COUNTER HEIGHT: Specify -36 and add \$43 List.
- ADJUSTABLE HEIGHT: see page 40 for more information. Add \$74 List.
- CASTERS: 2" dual wheel locking caster, 112 lbs. capacity. Specify -C and add \$26 List.
- SELF LEVELING GLIDES (SLG-M8): See page 51 for more information. Add \$30.
- FOLDING: see page 42 for more information. Add \$170 List.



CL-24



CL-24-C

Part #	Unit Height	Column Diameter	Base Spread	Recommended Top Depth	Net Weight	List Price (Each)
CL-18	27.75"	2"	16"	18"- 22"	7 lbs.	\$121
CL-24	27.75"	2"	22"	24"- 28"	8 lbs.	\$123
CL-30	27.75"	2"	26"	28"- 30"	9 lbs.	\$128

## Dual Column C-Legs

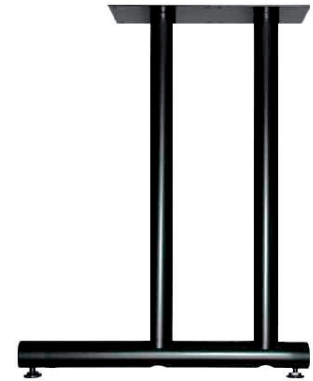
Fabricated 14 gauge steel with steel endcaps and threaded inserts for levelers or casters.

### Features:

- UNIT HEIGHT: 27.75", 34.75", and 40.75"
- WELDED MOUNTING PLATE: 5" x 11" x 7/32" steel
- LEVELING GLIDES: 1-3/8" diameter plastic with steel threaded inserts.
- FINISH: stock color is Black. See inside of Back Cover for additional color options.
- PACKAGING: bases are packaged 2 per box, priced individually.

### Options:

- CUSTOM HEIGHT: Specify -CUT1 for height <27.75". Add \$92 List. Specify -CUT2 for height >27.75". Add \$178 List.
- BAR HEIGHT: Specify -42 and add \$86 List.
- COUNTER HEIGHT: Specify -36 and add \$86 List.
- ADJUSTABLE HEIGHT: see page 40 for more information. Add \$148 List.
- CASTERS: 2" dual wheel locking caster, 112 lbs. capacity. Specify -C and add \$26 List.
- SELF LEVELING GLIDES (SLG-M8): See page 51 for more information. Add \$30.
- PERFORATED PANEL: decorative panel snaps between the columns. Specify -PI-2TL. Add \$65 List.



2CL-30



2CL-30-PI-2TL  
with perforated panel

Part #	Unit Height	Column Diameter	Base Spread	Recommended Top Depth	Net Weight	List Price (Each)
2CL-24	27.75"	2"	22"	24"- 28"	11 lbs.	\$167
2CL-30	27.75"	2"	26"	30"- 36"	12 lbs.	\$170

# Dual Column H-Legs

Fabricated 14 gauge steel with steel endcaps and threaded inserts for levelers or casters.

## Features:

- UNIT HEIGHT: 27.75", 34.75", and 40.75"
- WELDED MOUNTING PLATE: (2) 6" x 6" x 7/32" steel
- LEVELING GLIDES: 1-3/8" diameter plastic with steel threaded inserts.
- FINISH: stock color is Black. See inside of Back Cover for additional color options.
- PACKAGING: bases are packaged 2 per box, priced individually.

## Options:

- CUSTOM HEIGHT: Specify -CUT1 for height <27.75". Add \$92 List. Specify -CUT2 for height >27.75". Add \$178 List.



HL-24



HL-2442

Part #	Unit Height	Column Diameter	Base Spread	Recommended Top Depth	Net Weight	List Price (Each)
HL-24	27.75"	2"	16.5"	24" - 28"	12 lbs.	\$122
HL-24-C with casters	27.75"	2"	16.5"	24" - 28"	11 lbs.	\$148
HL-2436	34.75"	2"	16.5"	24" - 28"	13 lbs.	\$208
HL-2442	40.75"	2"	16.5"	24" - 28"	14 lbs.	\$208
HL-30	27.75"	2"	22.5"	30" - 40"	13 lbs.	\$137
HL-30-C with casters	27.75"	2"	22.5"	30" - 40"	12 lbs.	\$163
HL-3036	34.75"	2"	22.5"	30" - 40"	14 lbs.	\$223
HL-3042	40.75"	2"	22.5"	30" - 40"	16 lbs.	\$223
HL-330	27.75"	3"	23.5"	30" - 40"	16 lbs.	\$160
HL-342	27.75"	3"	30"	42" - 48"	18 lbs.	\$186

# Single Column X-Bases

Fabricated 14 gauge steel column and 14 gauge feet with threaded inserts for levelers or casters. Bolted construction.

## Features:

- UNIT HEIGHT: 27.75"
- LEVELING GLIDES: 1-3/8" diameter plastic with steel threaded inserts.
- FINISH: stock color is Black. See inside of Back Cover for additional color options.
- PACKAGING: bases are packaged in 2 boxes

## Options:

- CUSTOM HEIGHT: Specify -CUT1 for height <27.75". Add \$46 List. Specify -CUT2 for height >27.75". Add \$89 List.
- BAR HEIGHT: Specify -42 and add \$43 List. Flip top bases are not available in bar height.
- CASTERS: 2" dual wheel locking caster, 112 lbs. capacity. Specify -C and add \$52 List.
- SELF LEVELING GLIDES (SLG-M8): See page 51 for more information. Add \$60.



XL-36



XL-36QF

Part #	Column Diameter	Base Spread	Mounting Plate Size	Recommended Top Size	Net Weight	List Price
XL-24	3"	20" x 20"	10" x 10"	20" - 24" Rd. 20" - 22" Sq.	15 lbs.	\$186
XL-30	3"	26" x 26"	10" x 10"	26" - 36" Rd. 26" - 30" Sq.	17 lbs.	\$191
XL-36	3"	32" x 32"	10" x 10"	32" - 42" Rd. 32" - 36" Sq.	19 lbs.	\$197
XL-42	3"	36" x 36"	10" x 10"	36" - 48" Rd. 36" - 42" Sq.	21 lbs.	\$202
XL-48	3"	42" x 42"	10" x 10"	42" - 52" Rd. 42" - 48" Sq.	23 lbs.	\$209
XL-2436	3"	22" x 33"	10" x 10"	24" x 36"	18 lbs.	\$197

## Flip Top Bases

Part #	Column Diameter	Base Spread	Recommended Top Size	Net Weight	List Price
XL-24QF	3"	20" x 20"	20" - 24" Rd.	20 lbs.	\$350
XL-30QF	3"	26" x 26"	26" - 30" Rd.	25 lbs.	\$355
XL-36QF	3"	32" x 32"	32" - 36" Rd.	29 lbs.	\$361
XL-42QF	3"	36" x 36"	36" - 48" Rd.	26 lbs.	\$366



# Multi Column X-Bases

Fabricated 11 gauge steel columns and 14 gauge feet with threaded inserts for levelers or casters. Bolted construction.

## Features:

- UNIT HEIGHT: 27.75"
- MOUNTING PLATE: 8" x 8" x 7/32" steel
- LEVELING GLIDES: 1-3/8" diameter plastic with steel threaded inserts.
- FINISH: stock color is Black. See inside of Back Cover for additional color options.
- PACKAGING: bases are packaged: 2XL in 2 boxes, 3XL in 3 boxes and 4XL in 4 boxes

## Options:

- BAR HEIGHT: Specify -42, 2XL add \$86 List, 3XL add \$129 List, and 4XL add \$172 List.
- CASTERS: 2" dual wheel locking caster, 112 lbs. capacity. Specify -C, 2XL add \$78 List, 3XL add \$104 List, and 4XL add \$130 List.
- SELF LEVELING GLIDES (SLG-M8): See page 51 for more information. 2XL add \$90 List, 3XL add \$120 List, and 4XL add \$150 List.



2XL-3672



3XL-4896

Part #	Column Diameter	Base Spread	Recommended Top Size	Net Weight	List Price
<b>Dual Column X-Bases</b>					
2XL-2460	3"	53" x 20"	24" - 60"	31 lbs.	\$393
2XL-2466	3"	59" x 20"	24" - 66"	32 lbs.	\$393
2XL-2472	3"	62" x 20"	24" - 72"	33 lbs.	\$393
2XL-3060	3"	53" x 26"	30" - 60"	37 lbs.	\$393
2XL-3066	3"	59" x 26"	30" - 66"	34 lbs.	\$393
2XL-3072	3"	62" x 26"	30" - 72"	35 lbs.	\$393
2XL-3672	3"	68" x 32"	36" - 72"	38 lbs.	\$393
2XL-3684	3"	78" x 32"	36" - 84"	40 lbs.	\$393
2XL-4284	3"	78" x 36"	42" - 84"	42 lbs.	\$393
<b>Triple Column X-Bases</b>					
3XL-4296	3"	90" x 36"	42" - 96"	57 lbs.	\$614
3XL-42108	3"	102" x 36"	42" - 108"	54 lbs.	\$629
3XL-4896	3"	90" x 42"	48" - 96"	60 lbs.	\$646
3XL-48108	3"	102" x 42"	48" - 108"	62 lbs.	\$648
3XL-48120	3"	114" x 42"	48" - 120"	65 lbs.	\$666
<b>Quadruple Column X-Base</b>					
4XL-48144	3"	131" x 42"	24" - 28"	81 lbs.	\$856

## 4 and 5 Column X-Bases

Fabricated 14 gauge steel with steel endcaps and threaded inserts for levelers or casters. Bolted construction. 4XL-38 has 4 columns. 5XL-48 has 5 columns.

### Features:

- UNIT HEIGHT: 27.75" and 40.75"
- MOUNTING PLATE: 4XL-38 - 4" x 4". 5XL-48 - 10" x 10"
- LEVELERS: 1-3/8" diameter plastic with steel threaded inserts.
- LEVELING GLIDES: stock color is Black. See inside of Back Cover for additional color options.
- PACKAGING: 4 column bases are packaged in 1 box, 5 column bases are packaged in 2 boxes.



4XL-38



5XL-48

### Options:

- BAR HEIGHT: Specify -42, 4 columns add \$172 List, and 5 columns add \$215 List.
- CASTERS: 2" dual wheel locking caster, 112 lbs. capacity. Specify -C and add \$52 List.
- SELF LEVELING GLIDES (SLG-M8): See page 51 for more information. Add \$60 List.

Part #	Unit Height	Column Diameter	Base Spread	Mounting Plate Size	Recommended Top Size	Net Weight	List Price
4 columns							
4XL-38	27.75"	2"	38"	4" x 4"	42" - 60" Sq. 42" - 60" Rd.	35 lbs.	\$379
5 columns							
5XL-48	27.75"	2"	48"	10" x 10"	60" - 72" Sq. 60" - 84" Rd.	37 lbs.	\$412

# Sienna Round and Square Bases

Sienna bases provide modern look for offices, breakrooms, and training rooms. Bases include 4" column with 3/8" thick laser cut solid steel and flush mount adjustable glides.

## Features:

- UNIT HEIGHT: 27.75" and 40.75"
- WELDED MOUNTING PLATE: 8" x 8" x 7/32" steel
- COLUMN: 4" diameter
- LEVELING GLIDES: 3/4" diameter plastic for leveling on uneven floors.
- FINISH: stock color is Black and Metallic Silver (specify -MS). See inside of Back Cover for additional color options.
- PACKAGING: bases are packaged in 2 boxes, priced individually.

## Options:

- CUSTOM HEIGHT: Specify -CUT1 for height <27.75". Add \$46 List.  
Specify -CUT2 for height >27.75". Add \$89 List.
- SELF LEVELING GLIDES (SLG-M8): See page 51 for more information. Round base requires 5 self leveling glides, \$75 List.  
Square base requires 4 self leveling glides, \$60 List.



C4-22FPR

C442-2222FPS

Part #	Unit Height	Plate Size	Recommended Top Depth	Net Weight	List Price (Each)
Round Plate					
C4-18FPR	27.75"	18"D	24" - 30"	38 lbs.	\$347
C442-18FPR	40.75"	18"D	24" - 30"	41 lbs.	\$390
C4-22FPR	27.75"	22"D	30" - 36"	51 lbs.	\$418
C442-22FPR	40.75"	22"D	30" - 36"	54 lbs.	\$461
C4-26FPR	27.75"	26"D	36" - 48"	67 lbs.	\$502
C442-26FPR	40.75"	26"D	36" - 48"	70 lbs.	\$545
Square Plate					
C4-1818FPS	27.75"	18" x 18"	24" - 30"	46 lbs.	\$347
C442-1818FPS	40.75"	18" x 18"	24" - 30"	49 lbs.	\$390
C4-2222FPS	27.75"	22" x 22"	30" - 36"	65 lbs.	\$418
C442-2222FPS	40.75"	22" x 22"	30" - 36"	68 lbs.	\$461
C4-2626FPS	27.75"	26" x 26"	36" - 48"	86 lbs.	\$502
C442-2626FPS	40.75"	26" x 26"	36" - 48"	89 lbs.	\$545
FOOTGING-4	12"			6 lbs.	\$71

## Sienna X Bases

Designed for breakroom or conference room tables. The floor plate is heavy-duty 3/8" thick laser cut solid steel.

### Features:

- UNIT HEIGHT: 27.75" and 40.75"
- WELDED MOUNTING PLATE: 8" x 8" x 7/23" steel
- COLUMN: Single column base - 4" diameter, 4 column base - 3" diameter
- LEVELING GLIDES: 2-3/8" diameter plastic with steel threaded inserts.
- FINISH: stock color is Black and Metallic Silver (specify -MS). See inside of Back Cover for additional color options.
- PACKAGING: Single column X base is packaged in 2 boxes. 4 column X base is packaged in 5 boxes. Priced individually.

### Options:

- CUSTOM HEIGHT: Specify -CUT1 for height <27.75". Single column add \$46 List, 4 column add \$184 List. Specify -CUT2 for height >27.75". Single column add \$89 List, 4 column add \$356 List.
- BAR HEIGHT: Specify -42, single column add \$43 List. 4 column add \$172 List.
- CASTERS: 3" locking skate wheel caster with 112 lbs. capacity. Specify -SC1 and add \$88 List.
- SELF LEVELING GLIDES (SLG-M8): See page 51 for more information. Add \$60 List.



4C3-4848FPP



C3-2626FPP

Part #	Unit Height	Base Spread	Recommended Top Size	Net Weight	List Price (Each)
4 Column Base					
4C3-4848FPP	27.75"	48" x 48"	54" - 72" Rd.	77 lbs.	\$721
Single Column Base					
C3-2626FPP	27.75"	26" x 26"	30" - 36" dia.	26 lbs.	\$398
C342-2626FPP	40.75"	26" x 26"	30" - 36" dia.	28 lbs.	\$441
C3-3232FPP	27.75"	32" x 32"	36" - 42" dia.	32 lbs.	\$451
C342-3232FPP	40.75"	32" x 32"	36" - 42" dia.	34 lbs.	\$494
C3-3636FPP	27.75"	36" x 36"	42" - 48" dia.	39 lbs.	\$524
C342-3636FPP	40.75"	36" x 36"	42" - 48" dia.	40 lbs.	\$567

# Sienna Boomerang Base

Designed for a conference room environment or for corner desk application. 3" diameter column with a stylish boomerang shaped 3/8" thick laser cut steel foot.

## Features:

- UNIT HEIGHT: 27.75" and 40.75"
- WELDED MOUNTING PLATE: 8" x 8" x 7/32" steel
- COLUMN: 3" diameter
- LEVELING GLIDES: 2-3/8" diameter plastic for leveling on uneven floors.
- FINISH: stock color is Black and Metallic Silver (specify -MS). See inside of Back Cover for additional color options.
- PACKAGING: bases are packaged in 2 boxes, priced individually.



## Options:

- CUSTOM HEIGHT: Specify -CUT1 and height <27.75. Single column \$46 List, dual column add \$89 List. Specify -CUT2 and height >27.75. Single column add \$89 List, dual column add \$178 List.
- BAR HEIGHT: Specify -42, single column add \$43 List. Dual column add \$86 List
- CASTERS: 3" locking skate wheel caster with 112 lbs. capacity. Specify -SC1 and add \$44 List.
- SELF LEVELING GLIDES (SLG-M8): See page 51 for more information. Add \$45 List.



Part #	Unit Height	Plate Size	Recommended Top Size	Net Weight	List Price (Each)
Dual Column					
2C3-2LGBL-24	27.75"	22"	24"D X 36" - 84"W	26 lbs.	\$275
2C3-2LGBL-30	27.75"	26"	30" - 36"D X 36" - 84"W	28 lbs.	\$275
2C3-2LGBL-42	27.75"	36"	30" - 42"D X 42" - 96"W	38 lbs.	\$328
Single Column					
C3-LGBL-24L left	27.75"	22"	24"D X 36" - 84"W	17 lbs.	\$194
C3-LGBL-24R right	27.75"	22"	24"D X 36" - 84"W	17 lbs.	\$194
C3-LGBL-24 center	27.75"	22"	24"D X 36" - 84"W	17 lbs.	\$194
C3-LGBL-30 center	27.75"	26"	30" - 36"D X 36" - 84"W	19 lbs.	\$201
C3-LGBL-42 center	27.75"	36"	36" - 42"D X 42" - 96"W	29 lbs.	\$225

## Sienna Rectangle Base

Designed for conference tables and collaboration. The base features two 3" diameter columns and a heavy-duty solid steel plate rectangular floor plate 3/8" thick.

### Features:

- UNIT HEIGHT: 27.75" and 40.75"
- WELDED MOUNTING PLATE: 8" x 8" x 7/23" steel
- COLUMN: 3" diameter
- LEVELING GLIDES: 2-3/8" diameter plastic with steel threaded inserts.
- FINISH: stock color is Black and Metallic Silver (specify -MS). See inside of Back Cover for additional color options.
- PACKAGING: base is packaged in 3 boxes



2C3-2230FPR

### Options:

- CUSTOM HEIGHT: Specify -CUT1 for height <27.75". Single column add \$86 List, 4 column for \$172 List. Specify -CUT2 and height >27.75". Single column add \$89 List, 4 column add \$356 List.
- BAR HEIGHT: Specify -42, single column add \$86 List.
- SELF LEVELING GLIDES (SLG-M8): See page 51 for more information. Add \$90 List.



Part #	Unit Height	Floor Plate Size	Recommended Top Size	Net Weight	List Price
2C3-2230FPR	27.75"	48" x 48"	30" - 36" x 42" - 72"	92 lbs.	\$613

# Sienna T-Leg and C-Leg

T-Leg and C-Leg feature an elegant foot design for conference room or training room tables. The bases are constructed with 3" diameter columns with a floor plate made of a heavy-duty 3/8" thick laser cut solid steel.

## Features:

- UNIT HEIGHT: 27.75" and 40.75"
- WELDED MOUNTING PLATE: single column 5" x 8" plate. Dual column 8" x 8" plate.
- COLUMN: single column 2-3/4" x 2-3/4" square. Dual column 3" diameter.
- LEVELING GLIDES: 2-3/8" diameter plastic for leveling on uneven floors
- FINISH: stock color is Black and Metallic Silver (specify -MS). See inside of Back Cover for additional color options.
- PACKAGING: 2 floor plates per box. Single column bases are packaged in 1 box. Dual column bases are packaged in 2 boxes, priced individually.

## Options:

- BAR HEIGHT: Specify -42, single column add \$43 List. Dual column add \$86 List.
- CASTERS: 2.5" locking skate wheel caster with 112 lbs. capacity. Specify -SC1 and add \$44 List.
- SELF LEVELING GLIDES (SLG-M8): See page 51 for more information. Add \$30 List.



2C3-2LGBL-36



LGTL-24

LGCL-24

Part #	Unit Height	Base Spread	Recommended Top Size	Net Weight	List Price (Each)
Dual Column					
2C3-2LGBL-36	27.75"	32"	30" - 36"D X 42" - 96"W	29 lbs.	\$295
Single Column					
LGTL-18	27.75"	16"	18" - 20"D X 24" - 120"W	15 lbs.	\$164
LGTL-24	27.75"	22"	24"D X 36" - 84"W	17 lbs.	\$178
LGTL-30	27.75"	26"	30" - 36"D X 36" - 84"W	18 lbs.	\$186
LGTL-36	27.75"	32"	36"D X 42" - 96"W	20lbs.	\$209
LGCL-24	27.75"	22"	24"D X 36" - 84"W	17lbs.	\$178
C-Leg					
LGCL-30	27.75"	26"	30" - 36"D X 36" - 84"W	18 lbs.	\$186
C-Leg					

# Square End Base

Fabricated 14 gauge 2" x 1" rectangular tubular steel with threaded inserts for glides. Welded construction. Bases mount flush with table edge.

## Features:

- UNIT HEIGHT: 27.75"
- WELDED MOUNTING PLATE: 4-3/4"x 3-1/2"x 7/32"
- COLUMN: 14 gauge steel, 2" x 1" rectangular tube profile
- LEVELING GLIDES: 1-3/8" diameter nylon glide
- FINISH: stock color is Metallic Silver. See inside of Back Cover for additional color options.
- PACKAGING: bases are packed 2 per box, priced individually.



RSSB-24



Detail: base placement

Part #	Base Spread	Recommended Top Depth	Net Weight	List Price (Each)
RSSB-24	24"	24"	14 lbs.	\$212
RSSB-30	30"	30"	15 lbs.	\$231

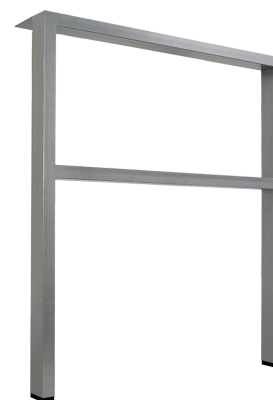


## Square H-Base

Fabricated 14 gauge 2" x 1" rectangular tubular steel with rectangular adjustable glides. Welded construction. Bases mount flush with table edge.

### Features:

- UNIT HEIGHT: 27.75"
- WELDED MOUNTING PLATE: 4-3/4"x 3-1/2"x 7/32"
- COLUMN: 14 gauge steel, 2" x 1" rectangular tube profile
- LEVELING GLIDES: rectangular adjustable glide
- FINISH: stock color is Metallic Silver. See inside of Back Cover for additional color options.
- PACKAGING: bases are packed 2 per box, priced individually.



RSHL-24



Detail: base placement



Detail: rectangular adjustable glide

Part #	Base Spread	Recommended Top Depth	Net Weight	List Price (Each)
RSHL-24	24"	24"	14 lbs.	\$189
RSHL-30	30"	30"	15 lbs.	\$212

## Structure T-Leg and C-Leg

Structure bases present a clean elegant look that complements a wide variety of interiors. It features 14 gauge 2" x 1" rectangular steel, bolted/welded construction and threaded inserts for glides.

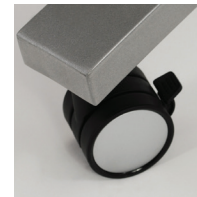
### Features:

- UNIT HEIGHT: 27.75"
- WELDED MOUNTING PLATE: 5" x 11" x 7/32" steel
- COLUMN: 14 gauge steel, 2" x 1" rectangular tube profile
- LEVELING GLIDES: 1-3/8" diameter nylon glide
- CASTERS: 1-3/4" dual wheel locking caster with silver cap, 112 lb. capacity.
- FINISH: stock color is Metallic Silver. See inside of Back Cover for additional color options.
- PACKAGING: bases are packed 2 per box, priced individually.



RS2T-24

RS2C-24



caster

Part #	Base Type	Base Spread	Recommended Top Size	Net Weight	List Price (Each)
RS2T-18	T-Leg	16"	18"D X 48" - 84"W	10 lbs.	\$155
RS2T-24	T-Leg	22"	24"D X 36" - 84"W	11 lbs.	\$160
RS2T-24-C2 with casters	T-Leg	22"	24"D X 36" - 84"W	11 lbs.	\$185
RS2C-24	C-Leg	22"	24"D X 36" - 84"W	11 lbs.	\$145
RS2C-24-C2 with casters	C-Leg	22"	24"D X 36" - 84"W	11 lbs.	\$170
RS2T-30	T-Leg	26"	30"D X 36" - 84"W	12 lbs.	\$165
RS2T-30-C2 with casters	T-Leg	26"	30"D X 36" - 84"W	12 lbs.	\$190
RS2C-30	C-Leg	26"	30"D X 36" - 84"W	12 lbs.	\$165
RS2C-30-C2 with casters	C-Leg	26"	30"D X 36" - 84"W	12 lbs.	\$190

# Structure Post Leg

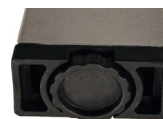
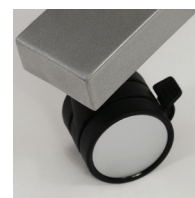
Fabricated 14 gauge 2" x 1" rectangular tubular steel post legs. Welded construction.

## Features:

- UNIT HEIGHT: 27.75"
- WELDED MOUNTING PLATE: 4 x 4" x 7/32"
- COLUMN: 14 gauge steel, 2" x 1" rectangular tube profile
- LEVELING GLIDES: rectangular adjustable glide
- CASTERS: 1-3/4" dual wheel locking caster with silver cap, 112 lb. capacity.
- FINISH: stock color is Metallic Silver. See inside of Back Cover for additional color options.
- PACKAGING: bases are packed 4 per box, priced individually.



RSP

rectangular adjustable  
glide

caster

Part #	Unit Height	Net Weight	List Price (Each)
RSP	27.75"	15 lbs.	\$69
RSP-C2 with casters	27.75"	15 lbs.	\$72

## Structure X-Base

Structure bases present a clean elegant look that complements a wide variety of interiors. Structure X-Base features 14 gauge 2" x 1" rectangular columns welded to a mounting plate. The one-piece foot is bolted to a column and features threaded inserts for glides.

### Features:

- UNIT HEIGHT: 14.75", 27.75" and 40.75"
- WELDED MOUNTING PLATE: 8" X 8" x 7/32"
- COLUMN: 14 gauge steel, (4) 2" x 1" rectangular tube profile
- LEVELING GLIDES: 1-3/8" diameter nylon glide
- FINISH: stock color is Metallic Silver. See inside of Back Cover for additional color options.
- PACKAGING: bases are packaged in 2 boxes



RS4X-24



RS4X-24-OH



RS4X-24-42

Part #	Unit Height	Base Spread	Recommended Top Size	Net Weight	List Price
RS4X-24-OH	14.75"	22" x 22"	24"	15 lbs.	\$415
RS4X-24	27.75"	22" x 22"	24"	20 lbs.	\$450
RS4X-24-42	40.75"	22" x 22"	24"	25 lbs.	\$490
RS4X-30-OH	14.75"	26" x 26"	30"	15 lbs.	\$430
RS4X-30	27.75"	26" x 26"	30"	15 lbs.	\$465
RS4X-30-42	40.75"	26" x 26"	30"	15 lbs.	\$505
RS4X-36-OH	14.75"	32" x 32"	36"	15 lbs.	\$470
RS4X-36	27.75"	32" x 32"	36"	15 lbs.	\$505
RS4X-36-42	40.75"	32" x 32"	36"	15 lbs.	\$545
RS4X-42-OH	14.75"	38" x 38"	42" - 48"	15 lbs.	\$515
RS4X-42	27.75"	38" x 38"	42" - 48"	15 lbs.	\$550
RS4X-42-42	40.75"	38" x 38"	42" - 48"	15 lbs.	\$590

# Structure Cube

Structure bases present a clean elegant look that complements a wide variety of interiors. Structure Cube base features 14 gauge 2" x 1" rectangular steel, bolted/welded construction and threaded inserts for glides.

## Features:

- UNIT HEIGHT: 27.75"
- WELDED MOUNTING PLATE: (4) 8" X 8"x 7/32"
- COLUMN: 14 gauge steel, 2" x 1" rectangular tube profile
- LEVELING GLIDES: 1-3/8" diameter nylon glide
- FINISH: stock color is Metallic Silver. See inside of Back Cover for additional color options.
- PACKAGING: bases are packed 1 per box



RSXO-36



Part #	Base Spread	Recommended Top Depth	Net Weight	List Price
RSXO-32	32" x 32"	36" - 42"	30 lbs.	\$365
RSXO-36	36" x 36"	48" - 54"	31 lbs.	\$410
RSXO-42	42" x 42"	60" - 72"	35 lbs.	\$465

# Spring Clip Height Adjustable Bases

Bolted construction 14 gauge tubular steel. Adjust in 1" increments by depressing spring clip pin to release the outer column for height adjustment. Pin snaps back into a locking position when realigned with the outer column holes. Thumb screw locks column in position.

## Features:

- ADJUSTMENT RANGE: 24.75" to 34.75"
- WELDED MOUNTING PLATE: 7/23" steel
- COLUMN: 2" diameter on outer column
- LEVELING GLIDES: 1-3/8" diameter plastic with steel threaded inserts.
- FINISH: stock color is Black. See inside of Back Cover for additional color options, excludes Black Wrinkle.
- PACKAGING: bases are packaged 2 per box. SPYL-AH are packaged 4 per box. Priced individually.

## Options:

- CASTERS: the height of the base will increase by 2" See page 51 for caster options. Specify -C for CL-AH, 2CL-AH and 2TL-AH bases add \$26 List. Specify -SC1 for SPYL-AH (add \$0 List) and 1ATL-AH (add \$44 List).



Part #	Base Spread	Mounting Plate Size	Recom. Top Depth	Net Weight	List Price	Part #	Base Spread	Mounting Plate Size	Recom. Top Depth	Net Weight	List Price (Each)
SPYL-AH post leg	1.5"	4" - 4"	-	6 lbs.	\$98	1ATL-18-AH arched leg	16"	5" - 8"	-	6 lbs.	\$188
CL-18-AH C-Leg	16"	5" - 8"	18" - 22"	9 lbs.	\$195	1ATL-24-AH arched leg	22"	5" - 8"	18" - 22"	9 lbs.	\$191
CL-24-AH C-Leg	22"	5" - 8"	24" - 28"	10 lbs.	\$197	1ATL-30-AH arched leg	26"	5" - 8"	24" - 28"	10 lbs.	\$193
CL-30-AH C-Leg	26"	5" - 8"	28" - 30"	11 lbs.	\$202	2CL-24-AH C-Leg dual column	22"	(2) 5" - 8"	28" - 30"	11 lbs.	\$315
TL-18-AH T-Leg	16"	5" - 8"	18" - 20"	9 lbs.	\$196	2CL-30-AH C-Leg dual column	26"	(2) 5" - 8"	18" - 20"	9 lbs.	\$318
TL-20-AH T-Leg	18"	5" - 8"	20" - 22"	9 lbs.	\$196	2TL-24-AH T-Leg dual column	22"	(2) 5" - 8"	20" - 22"	9 lbs.	\$315
TL-22-AH T-Leg	20"	5" - 8"	22" - 24"	10 lbs.	\$198	2TL-30-AH T-Leg dual column	26"	(2) 5" - 8"	22" - 24"	10 lbs.	\$318
TL-24-AH T-Leg	22"	5" - 8"	24" - 28"	10 lbs.	\$198	2TL-42-AH T-Leg dual column	36"	(2) 5" - 8"	24" - 28"	10 lbs.	\$331
TL-30-AH T-Leg	26"	5" - 8"	28" - 30"	11 lbs.	\$201	2TL-48-AH T-Leg dual column	48"	(2) 5" - 8"	28" - 30"	11 lbs.	\$339

# Patriot Electric Height Adjustable Base

Patriot Electric base offers optimal solution for any adjustable height requirement in the office. This GSA approved base is an excellent first step toward improving the efficiency and well-being of your organization while still remaining budget conscious.

## Base Construction:

- FEET: T-Leg and C-Leg
- COLUMN: 2-stage base: height range 27" - 46" with 19" stroke.  
3-stage base: height range 24" - 48" with 24" stroke
- CONTROLLER: up/down switch comes standard, or programmable 4 height digital switch. Specify PAT-DIG-HS, add \$75 List.
- FINISH: stock color is Black (specify -B) and Metallic Silver specify (-MS). 30 additional colors available visit [specialt.net/patriotbase](http://specialt.net/patriotbase) for all color choices.
- PACKAGING: bases are packaged in 1 box, 3 column bases are packed in 3 boxes.



## Electrical Information:

- MOTOR: Dual Motor
- MOTOR NOISE: <43db
- MAX LIFTING SPEED: 1-2/8"/sec
- POWER CONSUMPTION: .3W
- OVERLOAD PROTECTION: 200 lbs
- Functions: Soft-Start-Stop



up/down switch (standard)



programmable digital switch



GS-28F-0015W

Part #	Base Type	Number of Columns	Base Spread	Recommended Top Size	Net Weight	List Price
<b>2-stage</b>						
PAT-2STG-24T	T-Leg	2	22"	24"D x 48"-84"W	55 lbs.	\$1125
PAT-2STG-30T	T-Leg	2	28"	30"D x 48"-84"W	55 lbs.	\$1135
PAT-2STG-24C	C-Leg	2	22"	24"D x 48"-84"W	55 lbs.	\$1125
PAT-2STG-30C	C-Leg	2	28"	30"D x 48"-84"W	55 lbs.	\$1135
PAT-2STG-3COL-24T	T-Leg	3	22"	24"D x 60"-72"W	80 lbs.	\$1730
PAT-2STG-3COL-30T	T-Leg	3	28"	30"D x 60"-72"W	80 lbs.	\$1740
PAT-2STG-3COL-24C	C-Leg	3	22"	24"D x 60"-72"W	80 lbs.	\$1730
PAT-2STG-3COL-30C	C-Leg	3	28"	30"D x 60"-72"W	80 lbs.	\$1740
<b>3-stage</b>						
PAT-3STG-24T	T-Leg	2	22"	24"D x 48"-84"W	55 lbs.	\$1219
PAT-3STG-30T	T-Leg	2	28"	30"D x 48"-84"W	55 lbs.	\$1229
PAT-3STG-24C	C-Leg	2	22"	24"D x 48"-84"W	55 lbs.	\$1219
PAT-3STG-30C	C-Leg	2	28"	30"D x 48"-84"W	55 lbs.	\$1229
PAT-3STG-3COL-24T	T-Leg	3	22"	24"D x 60"-72"W	80 lbs.	\$1835
PAT-3STG-3COL-30T	T-Leg	3	28"	30"D x 60"-72"W	80 lbs.	\$1845
PAT-3STG-3COL-24C	C-Leg	3	22"	24"D x 60"-72"W	80 lbs.	\$1835
PAT-3STG-3COL-30C	C-Leg	3	28"	30"D x 60"-72"W	80 lbs.	\$1845

Specify base color Black (-B) or Metallic Silver (-MS)

## Folding T-Leg and C-Leg

Molded folding mechanism is operated by a lever which can be pushed up by hand or foot making a positive connection in both open and closed position. Folding mechanism allows legs to lay flat when table is 60" or longer. To fold smaller tables, rising brackets must be used.

### Features:

- UNIT HEIGHT: 27.75"
- COLUMN: 2" diameter
- MECHANISM DIMENSION: 9" x 8" x 3"
- RISING BRACKET: is necessary for folding tables under 60" long.  
Specify -RISER
- LEVELING GLIDES: 1-3/8" diameter plastic with steel threaded inserts.
- FINISH: stock color is Black. See inside of Back Cover for additional color options
- PACKAGING: bases are packaged 2 per box, priced individually.

### Options:

- CASTERS: 2" dual wheel locking caster, 112 lbs. capacity or 3" locking skate casters each 112 lbs. capacity depending on leg style. Specify -C, add \$26 List.
- TABLE CART: transporting and storage of folding tables. See page 52 for more information.



TL-30GFM



Part #	Leg Style	Base Spread	Recommended Top Depth	Net Weight	List Price (Each)
CL-18GFM	C-Leg	18"	18" - 22"	8 lbs.	\$291
CL-24GFM	C-Leg	22"	24" - 28"	9 lbs.	\$293
CL-30GFM	C-Leg	26"	28" - 30"	10 lbs.	\$298
TL-18GFM	T-Leg	16"	18" - 20"	8 lbs.	\$292
TL-20GFM	T-Leg	18"	20" - 22"	8 lbs.	\$292
TL-22GFM	T-Leg	20"	22" - 24"	9 lbs.	\$294
TL-24GFM	T-Leg	22"	24" - 28"	9 lbs.	\$294
TL-30GFM	T-Leg	26"	28" - 30"	10 lbs.	\$297
RISER					\$40



# Kingston Flip Base

Includes a set of two legs, a heavy tubular steel beam, single point release dual lock mechanism and 2 hinges. Heavy-duty beam prevents table from sagging. Save space by nesting tables!

**Features:**

- UNIT HEIGHT: 27.75"
- MOUNTING PLATE: 5" x 8" x 7/32"
- CASTERS: standard 2" locking casters are included with T-Legs. Arched T-Legs come standard with 3" locking skate wheel casters. Both casters are 112 lbs. capacity
- FINISH: stock color is Black and Metallic Silver (specify -MS). See inside of Back Cover for additional color options
- PACKAGING: bases are packaged 1 set (2 legs) in 1 box and beam in a separate box.



TLSF-2460



release mechanism



T-Leg tables nested



Arched T-Leg tables nested

Part #	Leg Style	Base Spread	Recommended Top Size	Net Weight	List Price
TLSF-1848-C	T-Leg	16" x 43"	18"- 48"	25 lbs.	\$717
TLSF-1860-C	T-Leg	16" x 55"	18"- 60"	25 lbs.	\$729
TLSF-1872-C	T-Leg	16" x 67"	18"- 72"	29 lbs.	\$742
TLSF-2448-C	T-Leg	22" x 43"	24"- 48"	26 lbs.	\$717
ATLSF-2448-S	Arched T-Leg	22" x 43"	24"- 48"	25 lbs.	\$798
TLSF-2460-C	T-Leg	22" x 55"	24"- 60"	29 lbs.	\$729
ATLSF-2460-S	Arched T-Leg	22" x 55"	24"- 60"	27 lbs.	\$811
TLSF-2472-C	T-Leg	22" x 67"	24"- 72"	31 lbs.	\$742
ATLSF-2472-S	Arched T-Leg	22" x 67"	24"- 72"	29 lbs.	\$824
TLSF-3048-C	T-Leg	26" x 43"	30"- 48"	28 lbs.	\$717
ATLSF-3048-S	Arched T-Leg	26" x 43"	30"- 48"	25 lbs.	\$798
TLSF-3060-C	T-Leg	26" x 55"	30"- 60"	31 lbs.	\$729
ATLSF-3060-S	Arched T-Leg	26" x 55"	30"- 60"	27 lbs.	\$811
TLSF-3072-C	T-Leg	26" x 67"	30"- 72"	33 lbs.	\$742
ATLSF-3072-S	Arched T-Leg	26" x 67"	30"- 72"	29 lbs.	\$824

## Convertible Base

Our sleekly designed Convertible Base is constructed with space efficiency in mind. Its unique structure allows straight-on nesting in the flipped position. Each table takes up only 4.5" of space. The base includes locking skate casters for easy mobility. Heavy-duty beam prevents top from sagging.

### Features:

- **STRUCTURE:** 14 gauge 1.5" diameter tubular columns bent and welded together at 190° angle. Two end bases are connected with a heavy-duty beam with two hinges and one single point flip top mechanism in the center.
- **MOUNTING PLATE:** 5" x 8"
- **CASTERS:** black 3" locking skate wheel casters, 112 lbs. capacity
- **FINISH:** stock color is Black. See inside of Back Cover for additional color options.
- **PACKAGING:** bases are sold and packaged 1 set (2 legs) in 1 box and beam in a separate box.



release mechanism



tables nested

Part #	Base Spread	Recommended Top Size	Net Weight	List Price
CV-1848-S	18" x 42"	18" - 48"	29 lbs.	\$752
CV-1860-S	18" x 55"	18" - 60"	31 lbs.	\$764
CV-1872-S	18" x 67"	18" - 72"	34 lbs.	\$777
CV-2448-S	23.5" x 43"	24" - 48"	32 lbs.	\$764
CV-2460-S	23.5" x 55"	24" - 60"	35 lbs.	\$777
CV-2472-S	23.5" x 67"	24" - 72"	37 lbs.	\$791
CV-3048-S	27.5" x 43"	30" - 48"	32 lbs.	\$783
CV-3060-S	27.5" x 55"	30" - 60"	35 lbs.	\$796
CV-3072-S	27.5" x 67"	30" - 72"	37 lbs.	\$809

# Transform-2 Base

Transform-2 is a versatile contemporary base with straight-on nesting in flip top application. Its light-weight material, casters and one-handed activation allows anyone to flip and move tables with ease. Perforated steel modesty panel is an integral part of the base providing privacy and an elegant look at the same time. Continuous heavy-duty beam prevents top from sagging.

## Features:

- **STRUCTURE:** 14 gauge 1.5" diameter tubular legs are connected by modesty panel and a stretcher with flip top mechanism. Modesty panel attaches to the legs and extends 14" below the table top.
- **UNIT HEIGHT:** 28.75"
- **CASTERS:** locking dual wheel black 2-1/4" 112 lbs. capacity.
- **FINISH:** stock color is Black and Metallic Silver. See inside of Back Cover for additional color options.
- **PACKAGING:** each base is packaged in 2 boxes



Part #	Base Spread	Recommended Top Size	Net Weight	List Price
Black base				
TF2-2428-B	19" x 47"	24" - 48"	35 lbs.	\$457
TF2-2460-B	19" x 59"	24" - 60"	39 lbs.	\$491
TF2-2472-B	19" x 71"	24" - 72"	43 lbs.	\$533
Metallic Silver base				
TF2-2428-MS	19" x 47"	24" - 48"	35 lbs.	\$457
TF2-2460-MS	19" x 59"	24" - 60"	39 lbs.	\$491
TF2-2472-MS	19" x 71"	24" - 72"	43 lbs.	\$533

## Perforated Steel Modesty Panels

Perforated steel modesty panel provides stability, privacy and style to any table. The panel attaches directly to the worksurface with screws. It is fabricated with 18 gauge steel and includes a built-in wire channel for wire management.

### Features:

- **STRUCTURE:** perforation pattern - 3/16" diameter holes spaced 1-3/4" apart. Cable cutout is 1-1/2" x 3". The 3" x 3" wire channel runs through the bottom of the modesty panel.
- **PANEL HEIGHT:** 10"H
- **ATTACHMENT:** modesty panel attaches to the top with screws
- **FINISH:** stock color is Black. See inside of Back Cover for additional color options.
- **PACKAGING:** packaged 2 per box, priced individually.



Part #	Length	Height	Recommended Top Length	Number of Cable Cutouts	Cable Cutout Position	Net Weight	List Price (Each)
MP-1030	30"	10"	30"	1	center	10 lbs.	\$130
MP-1042SF	42"	10"	42"	1	center	13 lbs.	\$169
MP-1048SF	48"	10"	48"	1	center	14 lbs.	\$197
MP-1054SF	54"	10"	54"	1	center	15 lbs.	\$226
MP-1060SF	60"	10"	60"	2	12" from each end	16 lbs.	\$237
MP-1066SF	66"	10"	66"	2	12" from each end	20 lbs.	\$264
MP-1072SF	72"	10"	72"	2	12" from each end	22 lbs.	\$290
MP-1084SF	84"	10"	84"	2	(1) in center (2) 12" from each end	25 lbs.	\$335
MP-1096SF	96"	10"	96"	2	(1) in center (2) 12" from each end	30 lbs.	\$363

# Acrylite® Modesty Panels and Privacy Screens

Acrylite® Privacy Screens and Modesty panels provide an attractive and durable option to traditional acrylic products. The superiority of Acrylite® is in its excellent light diffusion, rigidity and smudge resistant surface. It is truly a high-quality product designed for years of performance.

## Panels:

- **STRUCTURE:** scratch and smudge resistant with smooth edges and corners
- **COLOR:** Frosted White
- **SIZE:** 12"H x 47", 59", 71"L; 3/8" thick



## Brackets:

- **MATERIAL:** extruded aluminum
- **STRUCTURE:** Durable permanent attachment with 2 screws per bracket underneath table for a seamless look when used in combination with the privacy screens and modesty panels. Compatible with 1" - 1.25" table tops.
- 2 brackets are included for 47" panel, and 3 brackets for 59" and 71" panels.



Part #	Size	Recommended Top Length	Net Weight	List Price (Each)
<b>Modesty Panel</b>				
MP-1248	12" x 47"	48"L	5 lbs.	\$300
MP-1260	12" x 59"	60"L	6 lbs.	\$350
MP-1272	12" x 71"	72"L	7 lbs.	\$400
<b>Privacy Screen</b>				
PS-1248	12" x 47"	48"L	5 lbs.	\$300
PS-1260	12" x 59"	60"L	6 lbs.	\$350
PS-1272	12" x 71"	72"L	7 lbs.	\$400

## Laminate Modesty Panels

Laminate modesty panels can match your table top or make a statement with a different color laminate.

### Features:

- **PANEL SIZE:** 3/4" thick, 10" high and 1/4" shorter than the top length.
- **ATTACHMENT:** permanently attaches directly to table. Mounting brackets are included.
- **COLORS:** any standard WilsonArt or Formica laminate on both sides.
- **EDGE:** 3mm PVC edge



Part #	Length	Recommended Top Length	Net Weight	List Price
MPL-1042	41.75"	42"	8 lbs.	\$136
MPL-1048	47.75"	48"	9 lbs.	\$142
MPL-1054	53.75"	54"	10 lbs.	\$156
MPL-1060	59.75"	60"	11 lbs.	\$162
MPL-1066	65.75"	66"	12 lbs.	\$169
MPL-1072	71.75"	72"	13 lbs.	\$183
MPL-1084	83.75"	84"	16 lbs.	\$224
MPL-1096	95.75"	96"	18 lbs.	\$243

# Workstation Shelf Riser

Fabricated 14 gauge steel with threaded inserts.

**Features:**

- **ATTACHMENT:** posts are attached by a bolt running through the desktop
- **MOUNTING PLATE:** 5" x 8" 7/32" steel
- **FINISH:** stock color is Black. See inside of Back Cover for additional color options.
- **PACKAGING:** risers are packaged 2 per box, priced individually.



2SP-11



2SP-20

Part #	Unit Height	Column Diameter	Net Weight	List Price (Each)
2SP-11	11"	2"	5 lbs.	\$104
2SP-20	20"	2"	6 lbs.	\$113
3SP-11	11"	3"	5 lbs.	\$137
3SP-20	20"	3"	6 lbs.	\$148

# Wire Management and Table Connectors



**Table Leg Wire Manager**

A half-moon shaped channel with adhesive double-sided tape. Features co-extruded invisible hinge that opens to accept wires. Serrated finish. Inside space is 7/16" by 1-3/32". Stock color is Black and Grey. Black is available in 24" and Grey in 16" and 24" length.

Part #	List Price
WM-24	\$42
WM-24-GR	\$42
WM-16-GR	\$42



**Large J-Shape Wire Manager**

J-shape wire management channel with adhesive double-sided tape to be fastened under a desk/work surface to keep cables up and out of the way. Available in 4, 5, 6 foot lengths. Size: 4-5/16" overall flange, 1-3/32" deep. Trough is 2-9/16" high. Stock color is Black with a serrated finish.

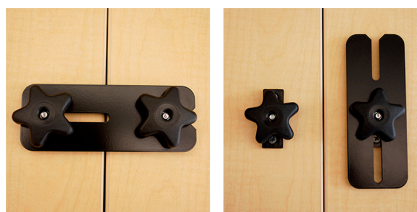
Part #	List Price
JWM-4	\$75
JWM-5	\$95
JWM-6	\$116



**Steel Top Support**

10 gauge channel. Screws are included. Available in 42" or 54" lengths.

Part #	List Price
STS-42	\$50
STS-54	\$56



**Quick Align Table Connector**

Connect two or more tables and add flexibility to any spaces. 6-1/4" x 2-1/2" steel plate, 2 plastic knobs.

Part #	List Price
QA	\$52



**LINK Connector**

Sold as a set of four components which connect together in pairs to join table work surfaces.

Part #	List Price
FLEKSIT-SET	\$40



# Casters and Glides



**Standard Caster**

2" locking dual wheel hooded casters, nylon. 25 mm x 8mm stem, 112 lbs capacity.

Part #	List Price
C-1	\$13



**Locking Skate Wheel Caster**

3" in-line skate wheel caster with gray ribbed core. 25mm x 8 mm stem, 112 lbs capacity.

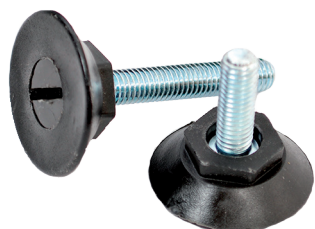
Part #	List Price
SC-1	\$22



**Hard Surface Caster**

2" locking dual wheel hooded caster with soft polyurethane for use on hard surface. 22 mm x 8mm stem, 112 lbs capacity.

Part #	List Price
HSC-1	\$17



**Adjustable Leveling Glide**

Metric thread: can be used on most Special-T table bases, 1-3/8" diameter nylon cap; 2" long.

Part #	List Price
ALG-1	\$2



**Self Leveling Glide**

Automatically stabilizes table. Easy to install. Requires no adjustment. Automatically adjusts 5/16" on any uneven surface. 1-3/8" diameter nylon cap. SLG-1 with 1/2 20 stem for cast iron bases only. SLG-M8 with 8 mm stem.

Part #	List Price
SLG-1	\$15
SLG-M8	\$15

# Table Cart

Simplify your folding table transportation and storage. Stack, store and transport up to 5 folding tables on a durable storage cart that maneuvers easily on swivel caster wheels.

## Features:

- **MATERIAL:** Frame is 1-1/2" diameter, 14 gauge steel, cross rails are 1-1/2" diameter, 11 gauge steel.
- **CASTERS:** 4 black 5" diameter locking casters
- **FINISH:** Black Wrinkle
- **PACKAGING:** table carts are shipped knocked down and packaged 1 per box.



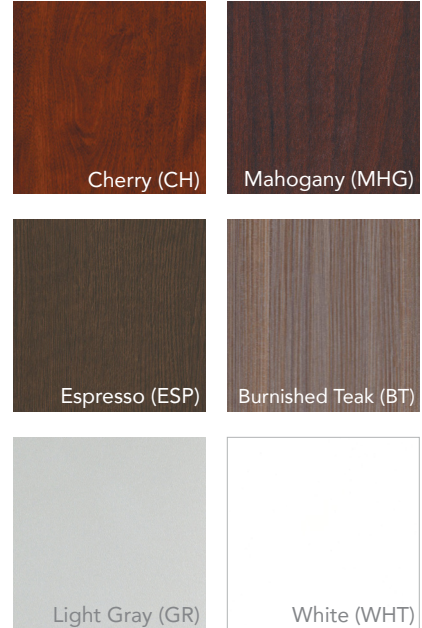
Part #	Dimensions	Capacities		Net Weight	List Price
		1-5 standard tables per card			
TBC-60	65"L x 32"D x 46"H	42" - 60" round tables		40 lbs.	\$846
		46" - 60" square tables			
		36" - 60"L up to 48"W rectangular tables			
TBC-72	77"L x 32"D x 35"H	24" - 36" round tables		45 lbs.	\$912
		24" - 36" square tables			
		24" - 72"L up to 36"W rectangular tables			
TBC-84	89"L x 32"D x 35"H	32" - 42" round tables		50 lbs.	\$976
		28" - 36" square tables			
		28" - 84"L up to 36"W rectangular tables			

# Table Tops - Ships in 24 hours

Durable thermo-fused table tops for office and restaurants with several color choices and matching edge. Steel top support is included on tops 60" or longer to prevent tops from sagging.

### Features:

- STRUCTURE: 1" thick with 3 mm vinyl edge
- LAMINATE: high impact 45# core in 6 laminate colors: Specify Cherry (-CH), Espresso (-ESP), Burnished Teak (-BT), Mahogany (-MHG), Light Gray (-GR), and White (-WHT).
- INSTALLATION: base location chart is included with every top.
- PACKAGING: tops are packaged individually.



Part #	Size	Net Weight	List Price	Part #	Size	Net Weight	List Price	Part #	Size	Net Weight	List Price
<b>Rectangle</b>				<b>Round</b>				<b>Square</b>			
1DT-1860	18"x 60"	30 lbs.	\$323	1DT-36R	36"	28 lbs.	\$364	1DT-3636	36"x 36"	36 lbs.	\$339
1DT-1872	18"x 72"	36 lbs.	\$366	1DT-42R	42"	38 lbs.	\$424	1DT-4242	42"x 42"	49 lbs.	\$403
1DT-2448	24 x 48"	32 lbs.	\$305								
1DT-2460	24"x 60"	40 lbs.	\$334								
1DT-2472	24"x 72"	48 lbs.	\$392								
1DT-3060	30"x 60"	50 lbs.	\$392								
1DT-3072	30"x 72"	60 lbs.	\$432								



# Important Information

## Convenient Payment Options:

faxed, check, Visa, Mastercard, American Express, and Discover

**Special-T** is an ISO 9000/9001 certified manufacturer. Our products meet or exceed all relevant ANSI/BIFMA standards. We are committed to the highest degree of quality and craftsmanship. Our Quality Management System is designed to guarantee the highest price-quality ratio.

## Terms:

Upon credit approval, terms are net 30 days from date of invoice. Prior to approved credit, payment must be received before shipping. We accept Visa, MasterCard, Discover and American Express. When you provide a faxed or mailed check, you authorize us either to use information from your check to make a one time electronic funds transfer from your account or to process this transaction as a check. 50% deposit required on all custom orders. COD payment method is not accepted.

## Lead-times:

Standard lead-time for all available stock products in standard finish is 24 hours after order is confirmed. When a custom finish is requested, lead-time is approximately 10 business days. Please contact the Special-T Customer Service Department at (888) 705-0777 to check availability. Curtain orders can be expedited for an additional 10% Expedited Order Fee.

## Acknowledgment of Orders:

All orders are entered, manufactured, and shipped according to the acknowledgment. Notify Special-T immediately of any discrepancy.

## Prices:

All prices are subject to change without notice.

## Return Policy:

The return of any merchandise to the Special-T warehouse must be authorized prior to shipment. Please contact our Customer Service Department at (888) 705-0777 to obtain Return Authorizations.

The Return Authorization Form must accompany all returns. If received in new condition and original packaging, a 25% restocking charge will apply. The following items are non-returnable and non-refundable: table tops and Closeout items.

## Cancellation Policy:

Custom orders are not subject to cancellation.

## Shipment Information:

Orders will be shipped via UPS or common LTL carrier, whichever is least expensive. Orders may be shipped collect on an alternative LTL carrier as designated. Special shipping arrangements and international shipping arrangement will be made as necessary and should be noted on the original Purchase Order. All orders are shipped FOB our warehouse. We do not ship COD. The buyer accepts legal responsibility for the merchandise when shipped. Upon receipt, please inspect shipment carefully for both visible and possible concealed damage. If package is lost or damage is discovered, the responsible receiving party should note this with the carrier and a claim should be filed immediately.

## Warranty:

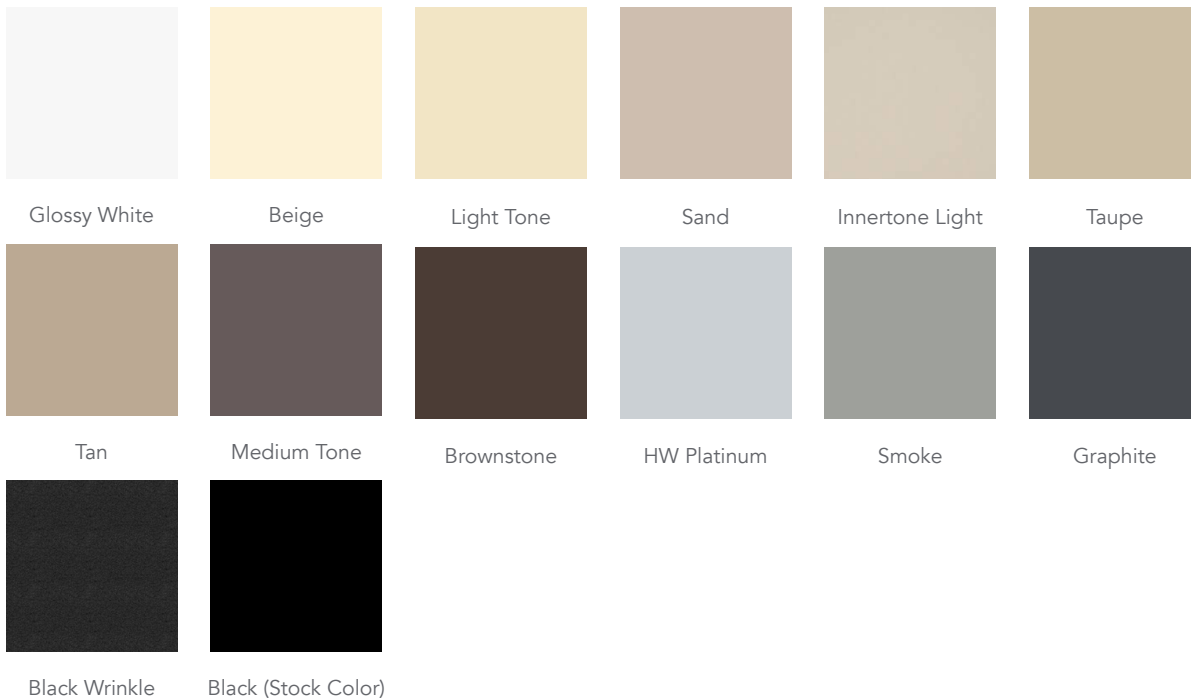
All bases manufactured by Special-T are guaranteed to be free of defects due to workmanship for a period of 10 years from the date of purchase.

We will repair or replace, at our discretion any product that we determine to be defective as a result of faulty material or workmanship. In no event shall our liability under this warranty exceed the original purchase price or the product determined to be defective. This warranty does not apply where product has been abused, mishandled, or subjected to use other than that for which it was designed. For purposed of this warranty, normal wear to the product finish shall not be considered a defect. There are no other warranties expressed or implied.

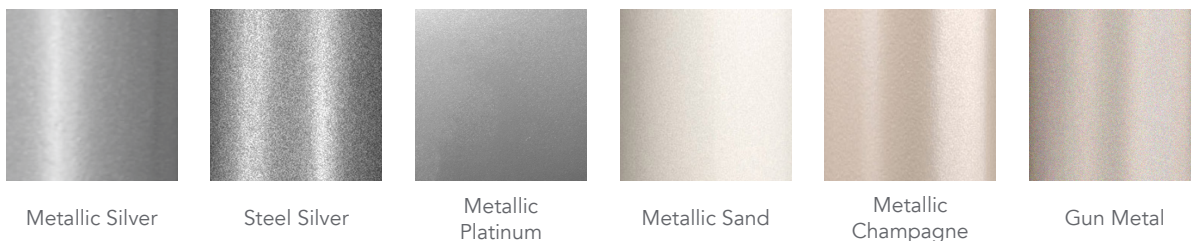
Electric Height Adjustable table bases are warranted to the original purchase for a period of 10 years from the date of delivery, under normal use against manufacturing defects.

# Metal Finishes

## Powder Coat:



## Powder Coat Metallic:



## Non-powder Coat:



Images are representative of the material, it may not be an exact match.

\*Metal finish vary by base style. Additional charges may apply. Refer to options for color availability



## TABLES & BASES

---

888.705.0777

[specialt.net](http://specialt.net)

Special-T  
11820 Wills Rd., Suite 140  
Alpharetta, GA 30009  
888-705-0777: phone  
678-456-6064: fax  
[customerservice@specialt.net](mailto:customerservice@specialt.net)



032018