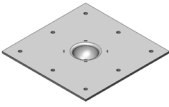


ClassiX Assembly Instructions

Parts Included:



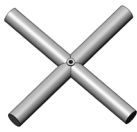
(1) Mounting Plate



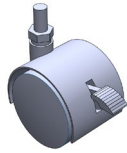
(1) Column Tube



(1) Threaded Rod



(1) Welded X-Foot
w/ Glides



(4) Casters
(Optional)

Hardware Included:

- (8) Table Screws

Tools Needed:

- Safety glasses
- 19mm socket & socket wrench
- #3 phillips bit
- Impact drill
- 13mm wrench (for optional casters)

Base Assembly:

1. Place welded x-foot on the floor with the glides down.
2. Set the column tube on top of the x-foot in the center.
3. Set the mounting plate on top of the column so that the small tabs in the column match the holes in the mounting plate.
4. Insert the threaded rod through the center of the mounting plate and down through the column tube. Use the 19mm socket and wrench to tighten the threaded rod.

Table Assembly:

1. Place table top upside down on soft surface to prevent scratching.
2. Place base on table top with the mounting plate against the underside of the table top. Align the predrill holes on the table top with the holes in the mounting plate.
3. Use the impact drill and #3 phillips bit to install ALL of the table screws provided.
4. Remove pre-installed glides and install optional casters using the 13mm wrench if necessary.
5. Enjoy Your Table!

