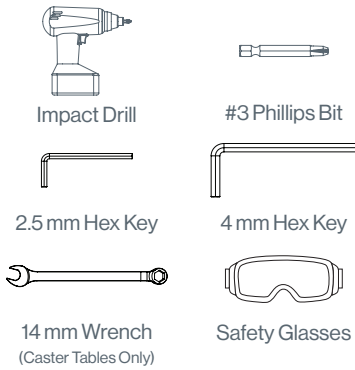
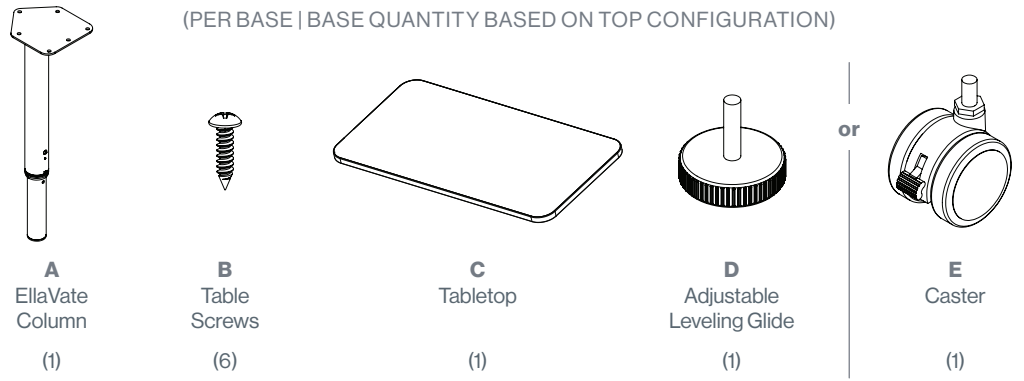


TOOLS



PARTS & HARDWARE LIST



D or E 

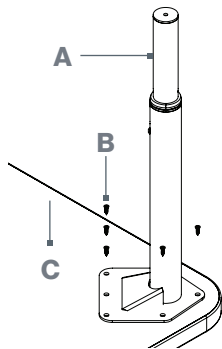
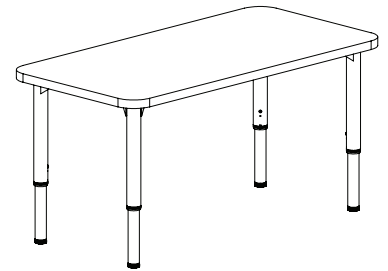


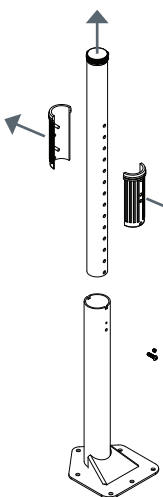
TABLE ASSEMBLY

1. Lay the tabletop (C) upside down on a piece of cardboard or carpeted surface.
2. Align the EllaVate Column Mounting Plate (A) with pre-drilled holes in the table surface (C).
3. Attach to the surface using (6) Table Screws (B).
4. Install Adjustable Leveling Glide (ELV-AH) (D) or Install Locking Caster (E) using 14MM wrench (ELV-AH-C).

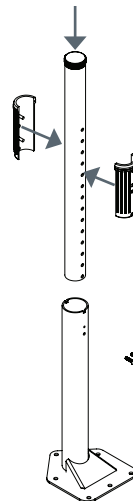


ASSEMBLED ELLAVATE TABLE

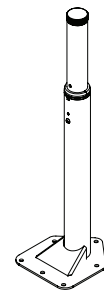
HEIGHT ADJUSTMENT



1. Remove the M6 fastener from EllaVate column using the 4MM Hex Key.
2. Remove the M5 fastener from EllaVate column using a 2.5MM Hex Key.
3. Remove the inner column from the outer column.
4. Remove both plastic alignment caps.



5. Replace plastic alignment caps in the desired position.
6. Insert the inner column into the outer column.
7. Return M6 Fastener & M5 Fastener into EllaVate Column.
8. Holding onto the edges of the table, carefully flip the table over.



ELLAVATE LEG SET TO MINIMUM HEIGHT

**FOR MISSING PARTS OR QUESTIONS,
PLEASE CALL CUSTOMER SERVICE AT 888-705-0777.**

