

Specification Sheet

AIM™ table celebrates an attractive modern design suitable for a variety of interiors and delivers a high level of sophistication to any space. AIM™ tables support the need for flexibility with three table heights, several shapes and sizes, premium casters, and versatile charging options.

Base Construction

- Welded
- Table height: 29"
- Columns are 2" x 1" rectangular steel
- Welded mounting plate: 6" x 6" x 7/32" steel
- Leveling glides: 1 3/8" diameter
- Finish: Black and Metallic Silver

Top Options

- 14 high pressure laminate colors with matching PVC edge
- Top Sizes: rectangular, round and square
- Structure: 1 1/4" thick 45# density particle board core
- .038 paper backer sheet less than 48"
- .038 phenolic backer equal or greater than 48"
- Tops are pre-drilled for easy installation

Edge Options

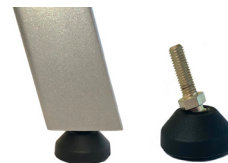
- Standard: 3mm PVC edge

Optional Features

- Bar height (42")
- Counter height (36")
- Pivoting rubberized glide
- Premium casters (2 locking, 2 non-locking)
- Privacy screen
- Modesty panel
- Wire management
- Table connectors
- Grommet
- Power and data



Premium caster



Pivoting rubberized glide

Warranty

- 10-year parts and labor

To expedite delivery, tops and bases ship separately on all 5-Day Quick Ship orders.

